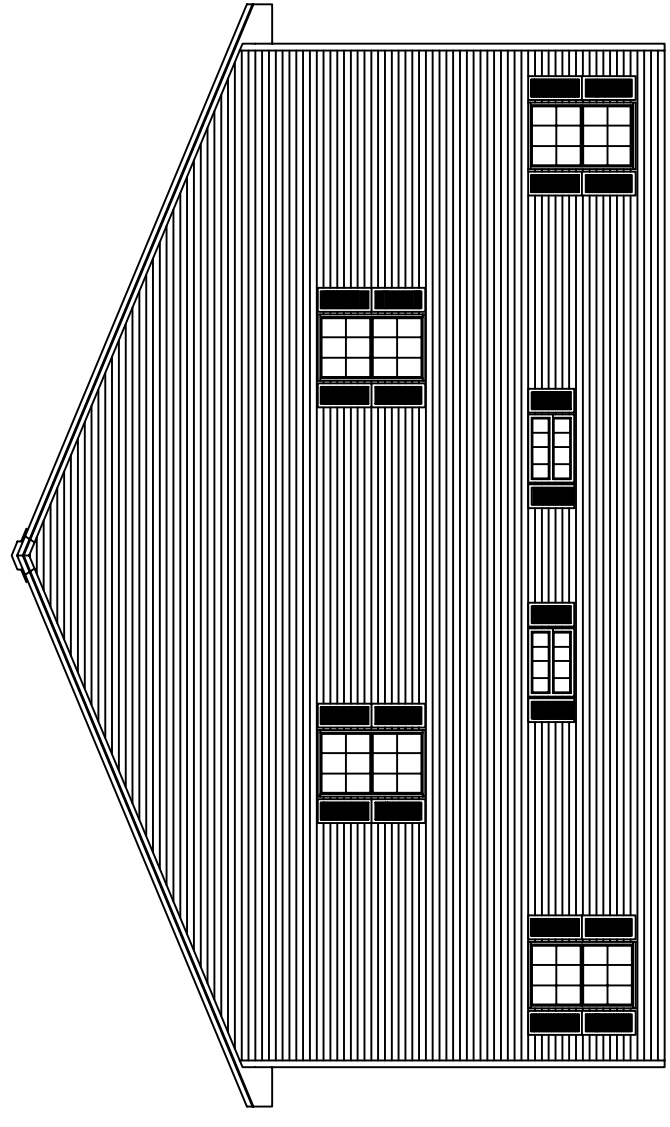
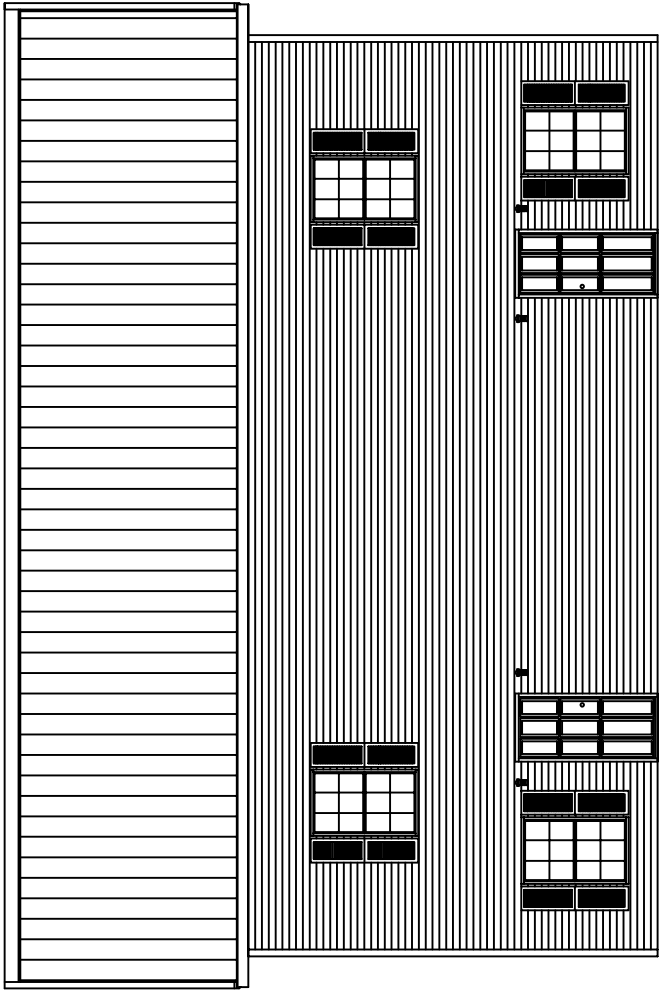


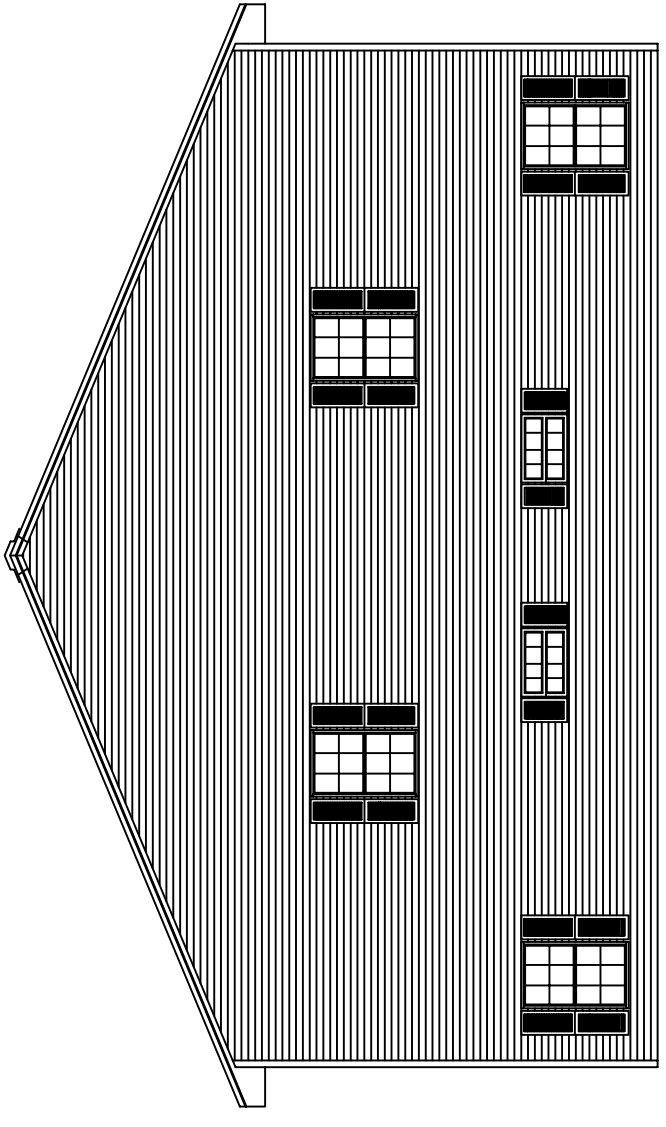
FRONT SIDEWALL ELEVATION



LEFT ENDWALL ELEVATION



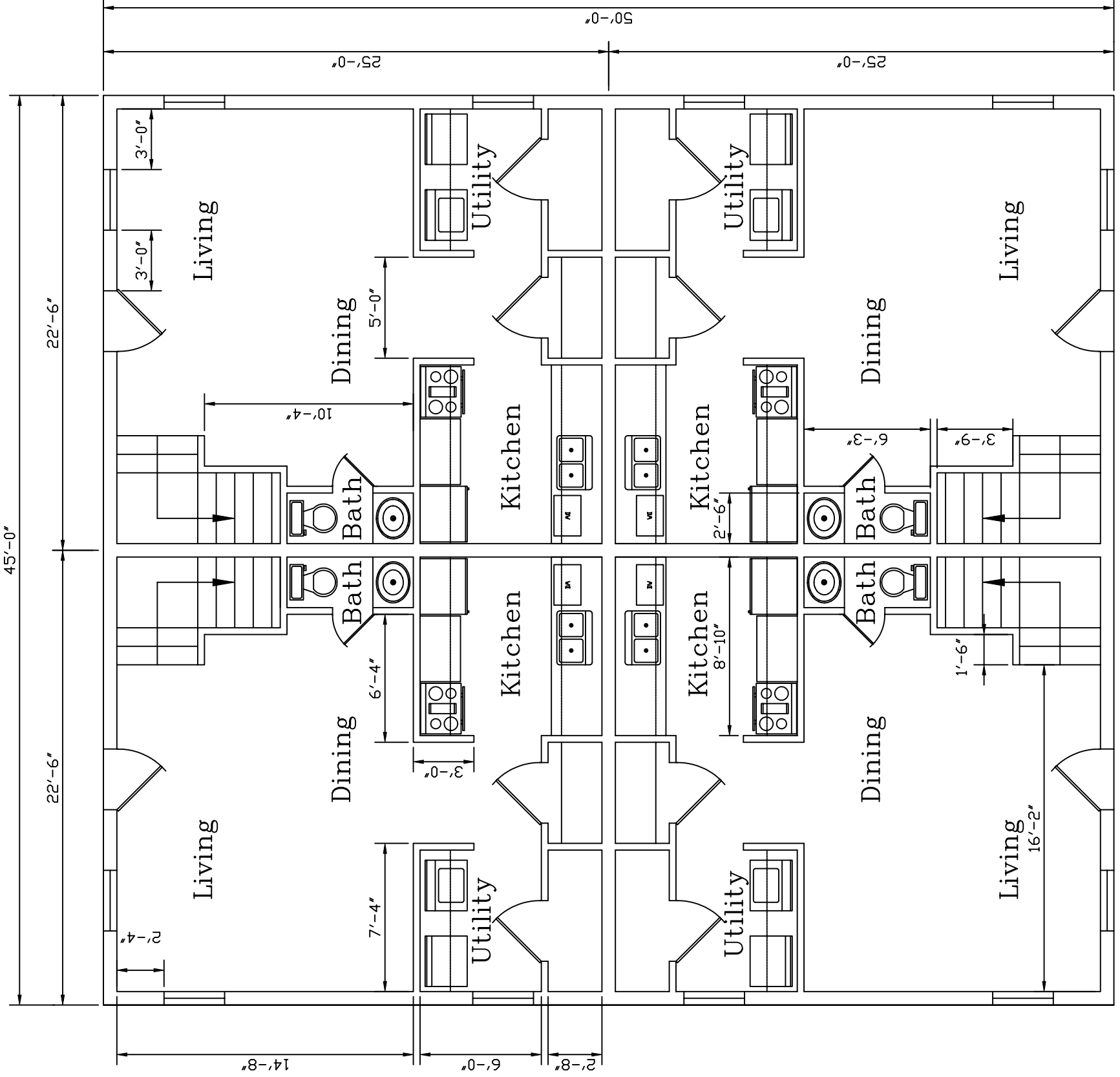
BACK SIDEWALL ELEVATION



RIGHT ENDWALL ELEVATION

REVISIONS		DESCRIPTION		BY (KTD)	DATE
NO.	DATE	DESCRIPTION	BY (KTD)	DATE	

KODIAK STEEL HOMES		Kodiak Steel Homes, Inc 7301 Industry Drive North Little Rock, AR 72117	
DESCRIPTION:	ELEVATIONS	STYLE:	FOURPLEX
DRW. BY:	EAP	DATE:	04/03
CHKD BY:	HD5	SCALE:	NT5
SIZE:	50'-0" X 45'-0"	CODE:	PG3
SHEET NO.:	AI	REV. #:	0



DISCLAIMER:
THIS FLOOR PLAN IS FOR REFERENCE ONLY.
LOCAL BUILDING CODES AND REGULATIONS
MAY CONFLICT.

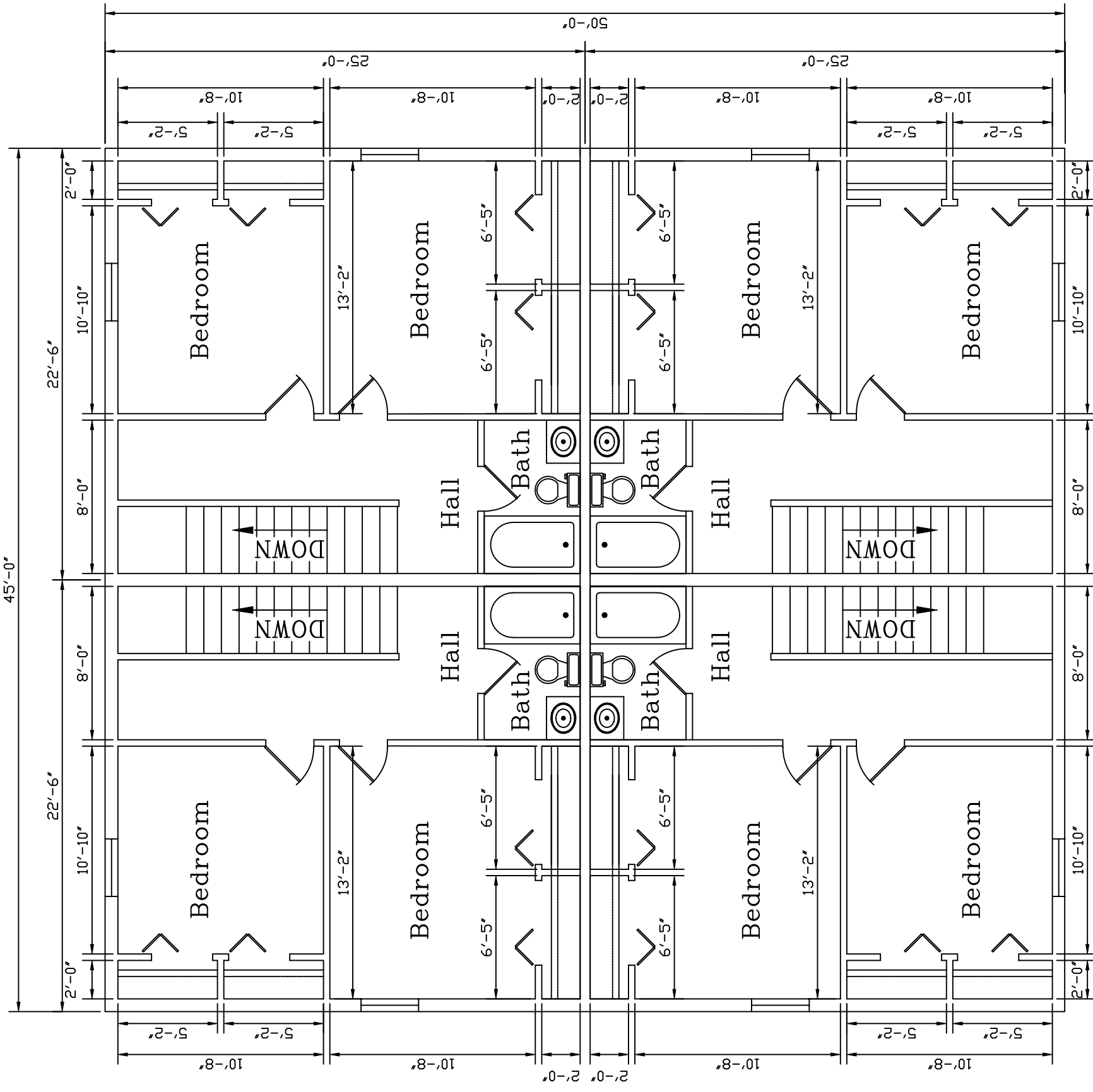
CHECK PRINT	
BY	DATE
CHECKED	-
BACK CK'D	-
SCRUBBED	-
GREENED OFF	-
TO 'T' DRIVE	-

REVISIONS			
NO.	DATE	DESCRIPTION	BY (CK'D)
-	-	-	-

DESCRIPTION:	STYLE: FOURPLEX	DATE	SCALE	NTS	REV. #
DRW. BY: EAP	CKD BY: HD5	DATE: 04/03	SCALE: NTS	CODE: PG3	SHEET NO. A2
KODIAK STEEL HOMES				SIZE: 50'-0" X 45'-0"	REV. # 0
Kodiak Steel Homes, Inc 7301 Industry Drive North Little Rock, AR 72117					

EXTERIOR FLOOR PLAN WINDOW AMOUNT = 12
EXTERIOR FLOOR PLAN DOOR AMOUNT = 4

DISCLAIMER:
THIS FLOOR PLAN IS FOR REFERENCE ONLY.
LOCAL BUILDING CODES AND REGULATIONS
MAY CONFLICT.



REVISIONS		NO.	DATE	DESCRIPTION	BY (K/D)	CT	VF
1	10/24/07	REVISED BATHROOMS & EXTENDED STAIRS					
UPSTAIRS FLOOR PLAN							
KODIAK STEEL HOMES							
Kodiak Steel Homes, Inc 7301 Industry Drive North Little Rock, AR 72117							
DESCRIPTION: UPSTAIRS FLOOR PLAN							
STYLE: FOURPLEX							
DRW. BY	EAP	CHKD BY	HD5	DATE	04/03	SCALE	NT5
REV. #	1	SHEET NO.	A3	CODE	PG3	SIZE:	50'-0" X 45'-0"

EXTERIOR FLOOR PLAN WINDOW AMOUNT = 8
EXTERIOR FLOOR PLAN DOOR AMOUNT = 0