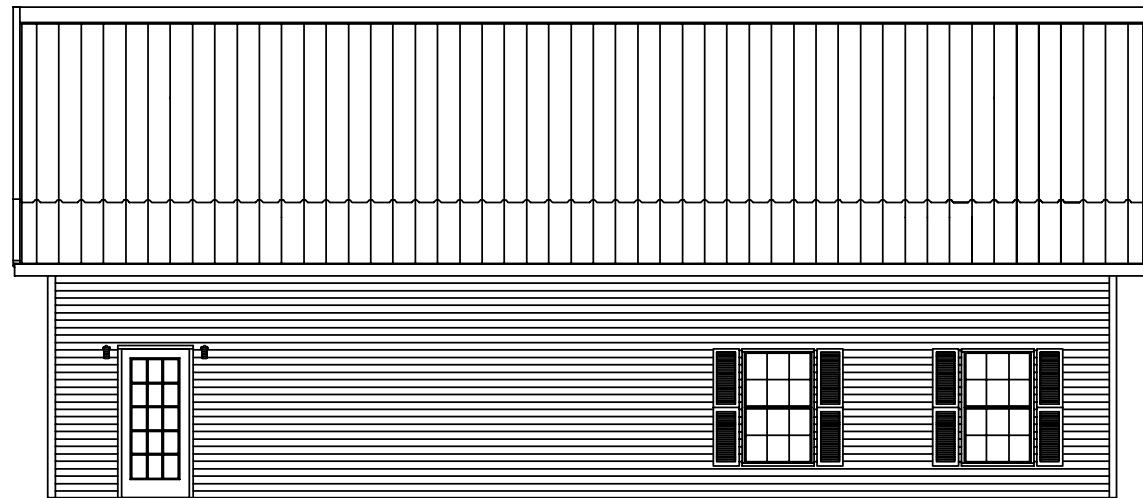




FRONT SIDEWALL ELEVATION



LEFT ENDWALL ELEVATION

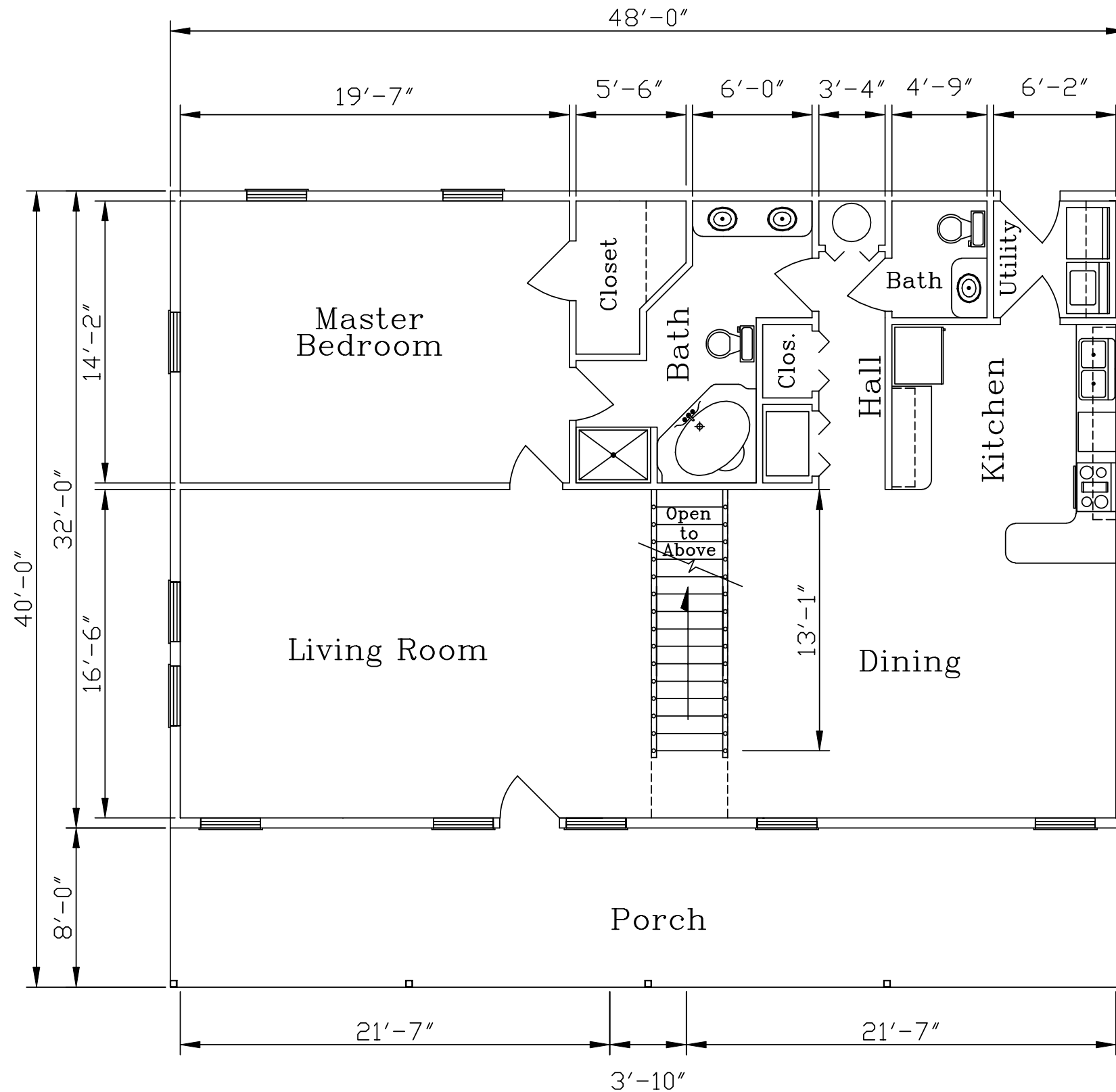


BACK SIDEWALL ELEVATION



RIGHT ENDWALL ELEVATION

REVISIONS					KODIAK STEEL HOMES		Kodiak Steel Homes, Inc 7301 Industry Drive North Little Rock, AR 72117	
NO.	DATE	DESCRIPTION	BY	CK'D	ELEVATIONS			
DESCRIPTION:					ELEVATIONS			
STYLE: CRESTWOOD 1					SIZE: 32'-0" X 48'-0"			
DRN. BY	CK'D BY	DATE	SCALE	CODE	SHEET NO.	REV. #		
EAP	HDS	04/03	NTS	CW1	A1 OF 10			



DISCLAIMER:
 THIS FLOOR PLAN IS FOR REFERENCE ONLY.
 LOCAL BUILDING CODES AND REGULATIONS
 MAY CONFLICT.

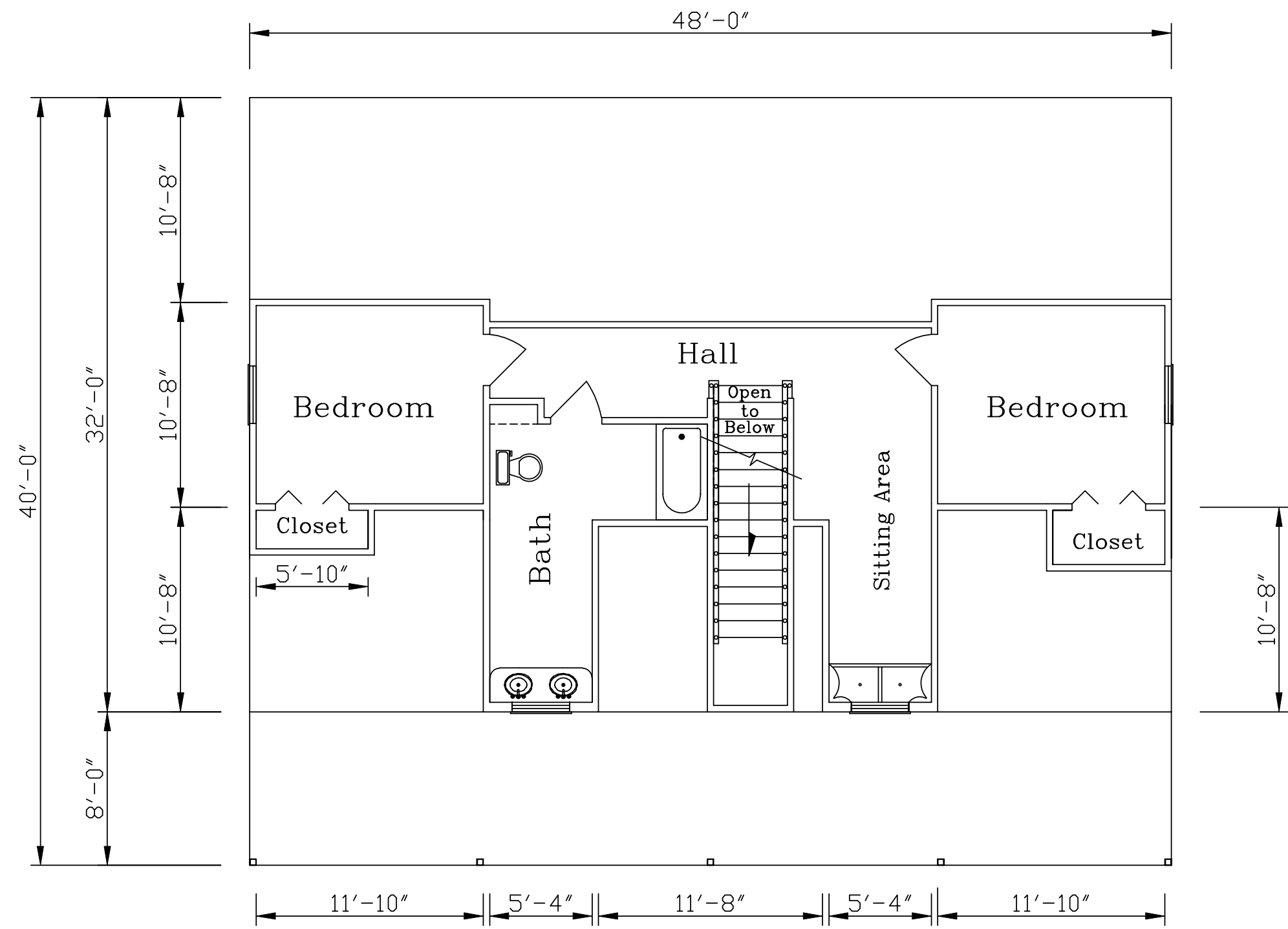
DOWNSTAIRS FLOOR PLAN

EXTERIOR FLOOR PLAN WINDOW AMOUNT = 13
 EXTERIOR FLOOR PLAN DOOR AMOUNT = 2

REVISIONS						
NO.	DATE	DESCRIPTION	BY	CK'D		

KODIAK STEEL HOMES		Kodiak Steel Homes, Inc 7301 Industry Drive North Little Rock, AR 72117				
DESCRIPTION:		DOWNSTAIRS FLOOR PLAN				
STYLE: CRESTWOOD 1		SIZE: 32'-0" X 48'-0"				
DRN. BY	CK'D BY	DATE	SCALE	CODE	SHEET NO.	REV. #
EAP	HDS	04/03	NTS	CW1	A2 OF 10	

DISCLAIMER:
 THIS FLOOR PLAN IS FOR REFERENCE ONLY.
 LOCAL BUILDING CODES AND REGULATIONS
 MAY CONFLICT.



UPSTAIRS FLOOR PLAN

EXTERIOR FLOOR PLAN WINDOW AMOUNT = 4
 EXTERIOR FLOOR PLAN DOOR AMOUNT = 0

REVISIONS						
NO.	DATE	DESCRIPTION	BY	CK'D		

KODIAK STEEL HOMES

DESCRIPTION: UPSTAIRS FLOOR PLAN

STYLE: CRESTWOOD 1

SIZE: 32'-0" X 48'-0"

DRN. BY: EAP

CK'D BY: HDS

DATE: 04/03

SCALE: NTS

CODE: CW1

Kodiak Steel Homes, Inc
 7301 Industry Drive
 North Little Rock, AR 72117

SHEET NO. A3 OF 10

REV. #