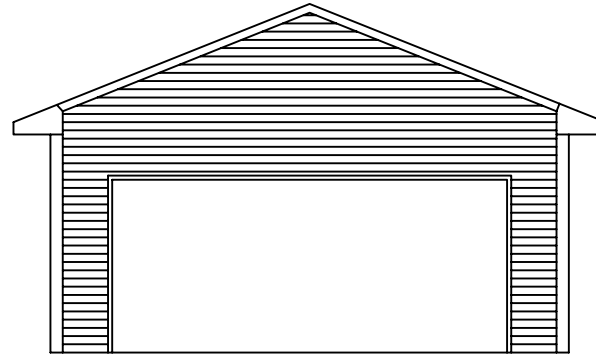
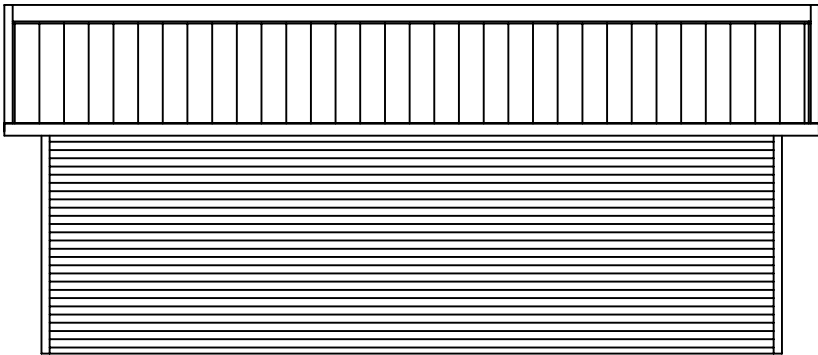


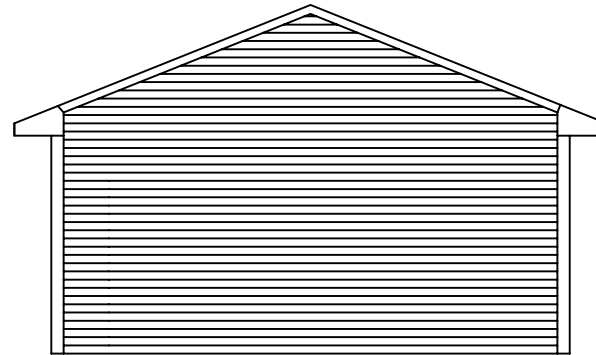
FRONT SIDE VIEW



LEFT SIDE VIEW



BACK SIDE VIEW

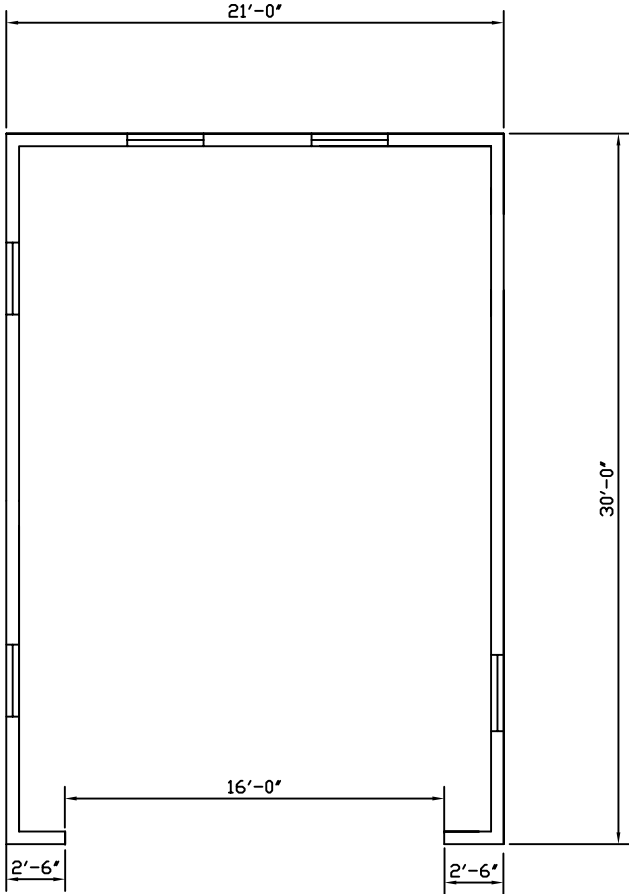


RIGHT SIDE VIEW



REVISIONS				ALL STEEL HOMES, INC.			
NO.	DATE	DESCRIPTION	BY	CHK'D	DESCRIPTION:	ELEVATION	

DISCLAIMER:  
 THIS FLOOR PLAN IS FOR REFERENCE ONLY.  
 LOCAL BUILDING CODES AND REGULATIONS  
 MAY CONFLICT.



REVISIONS				KODIAK STEEL HOMES			
NO.	DATE	DESCRIPTION	BY	CHK'D			

DESCRIPTION:				FLOOR PLAN			
STYLE: GARAGE 1A				SIZE: 21'-0" X 30'-0"			
DRN. BY	CK'D BY	DATE	SCALE	CODE	SHEET NO.	REV. #	
EAP	HDS	04/03	NTS	GATA	A1 OF 1		

**KODIAK STEEL HOMES**  
 Kodiak Steel Homes, Inc  
 7301 Industry Drive  
 North Little Rock, AR 72117