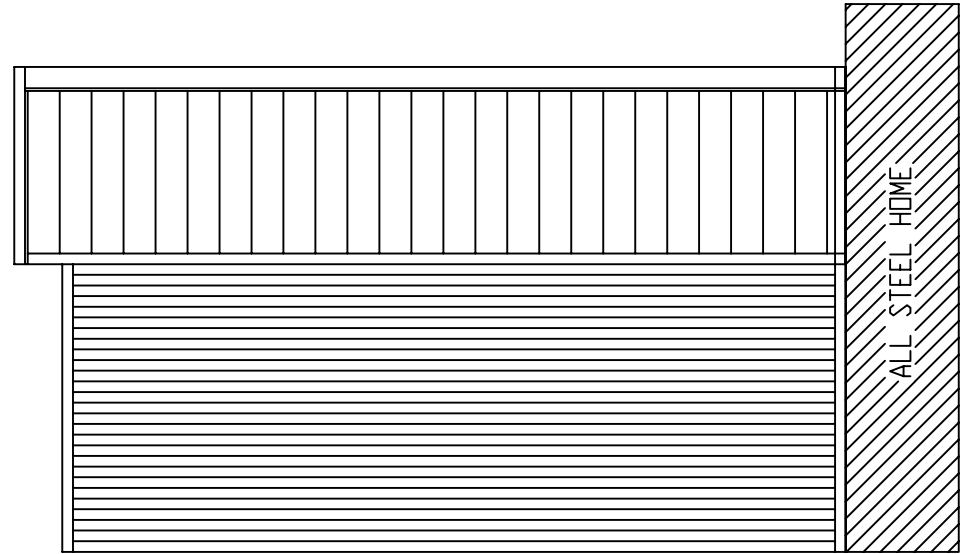


LEFT SIDE VIEW



FRONT SIDE VIEW

REVISIONS				KODIAK STEEL HOMES				Kodiak Steel Homes, Inc 7301 Industry Drive North Little Rock, AR 72117			
NO.	DATE	DESCRIPTION	BY	CHK'D	DESCRIPTION	ELEVATIONS					
					STYLE: GARAGE 2A	SIZE: 25'-0" X 24'-0"					
					DRN. BY	CK'D BY	DATE	SCALE	CODE	SHEET NO.	REV. #
					EAP	HDS	04/03	NTS	GA2A	A1 OF 2	

