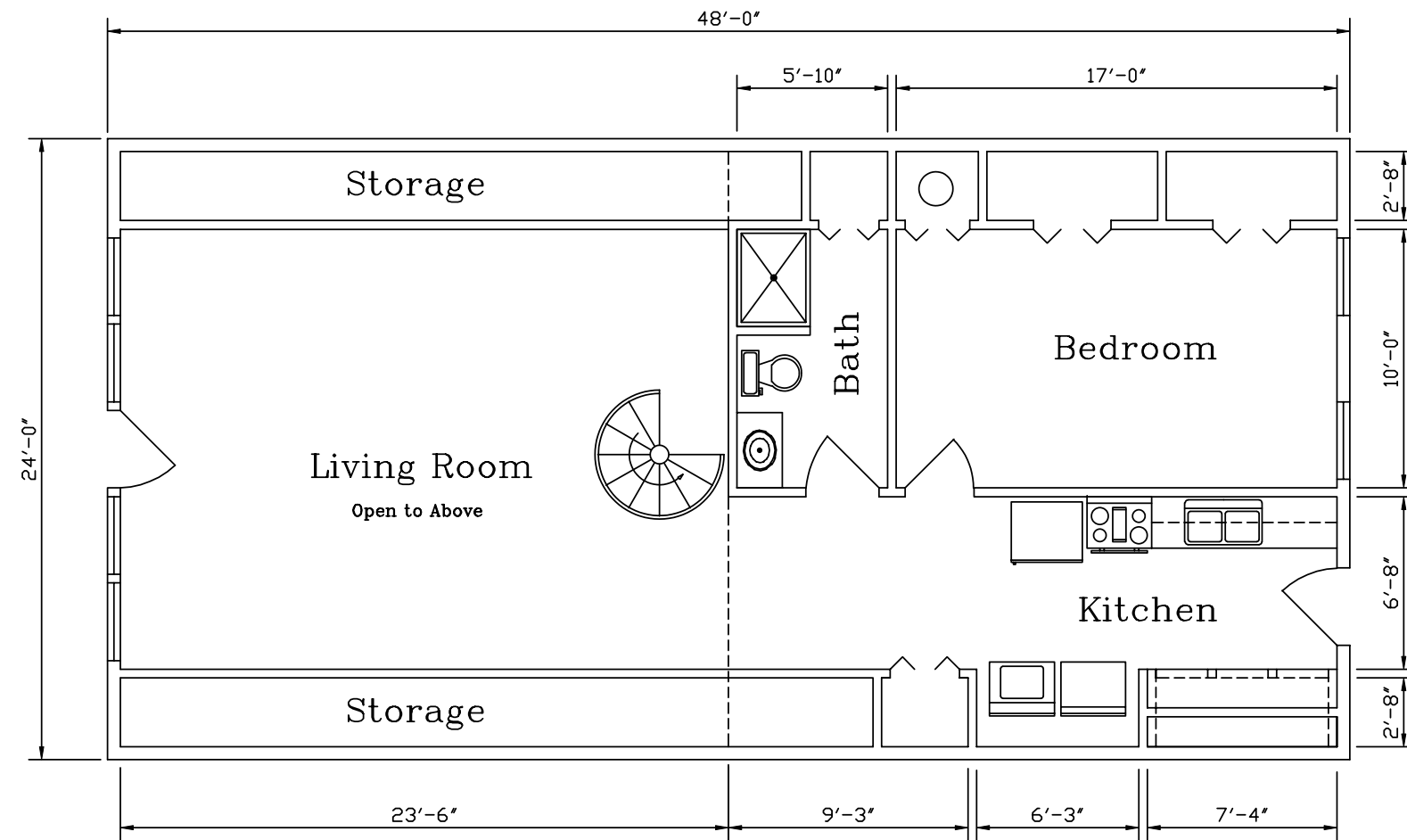


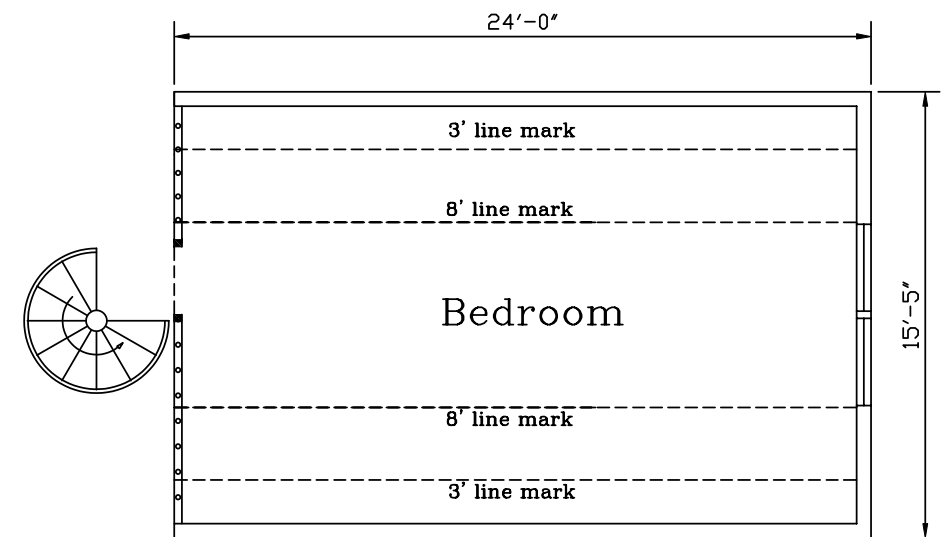


NOTE: STAIRS NOT PROVIDED BY ALL STEEL HOMES.

**DISCLAIMER:**  
THIS FLOOR PLAN IS FOR REFERENCE ONLY.  
LOCAL BUILDING CODES AND REGULATIONS  
MAY CONFLICT.



Bottom Floor



Upper Floor

EXTERIOR FLOOR PLAN WINDOW AMOUNT = 8  
EXTERIOR FLOOR PLAN DOOR AMOUNT = 2

REVISIONS					KODIAK STEEL HOMES						
NO.	DATE	DESCRIPTION	BY	CK'D	Kodiak Steel Homes, Inc 7301 Industry Drive North Little Rock, AR 72117						
					DESCRIPTION: FLOOR PLAN						
					STYLE: LAKESIDE 2	SIZE: 24'-0" X 48'-0"					
					DRN. BY: EAP	CK'D BY: HDS	DATE: 04/03	SCALE: NTS	CODE: LS2	SHEET NO.: A2 OF 5	REV. #