



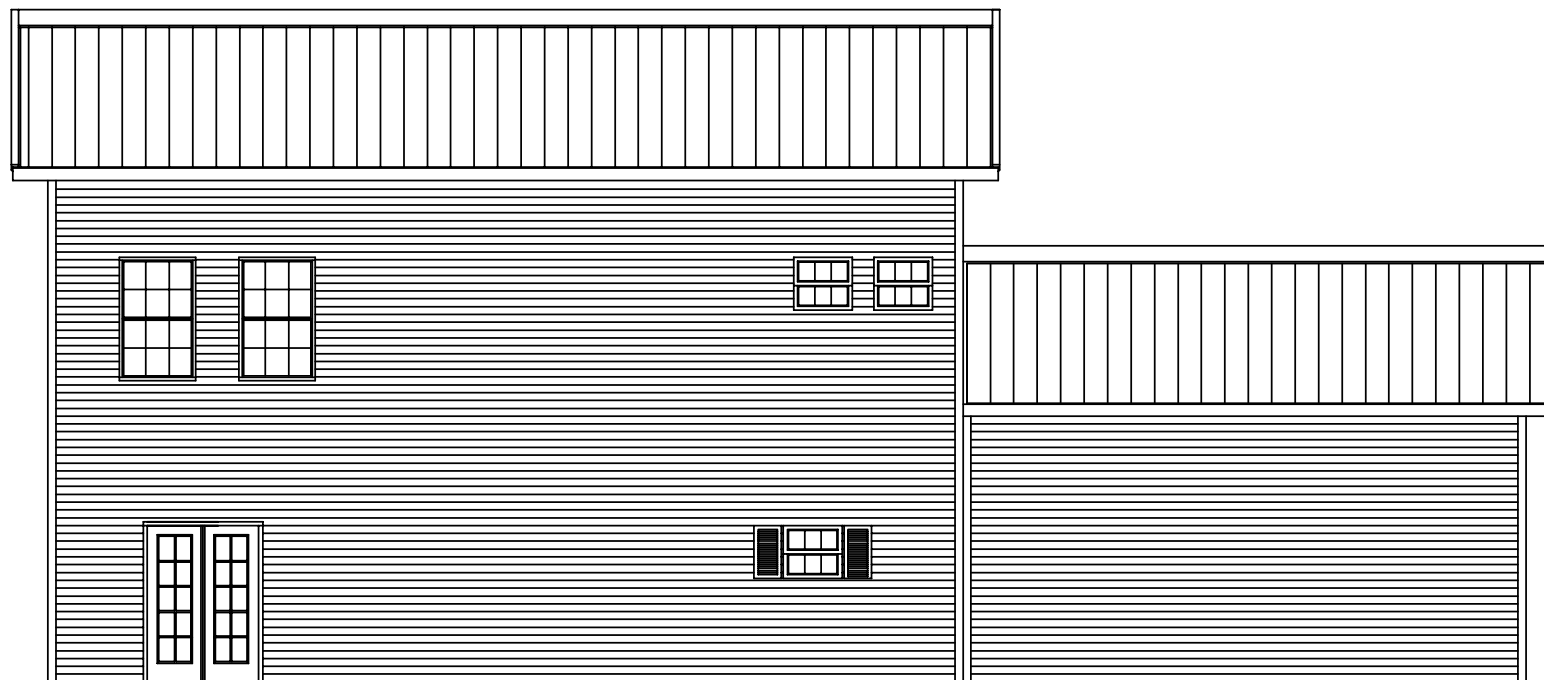
LEFT ENDWALL ELEVATION



FRONT SIDEWALL ELEVATION

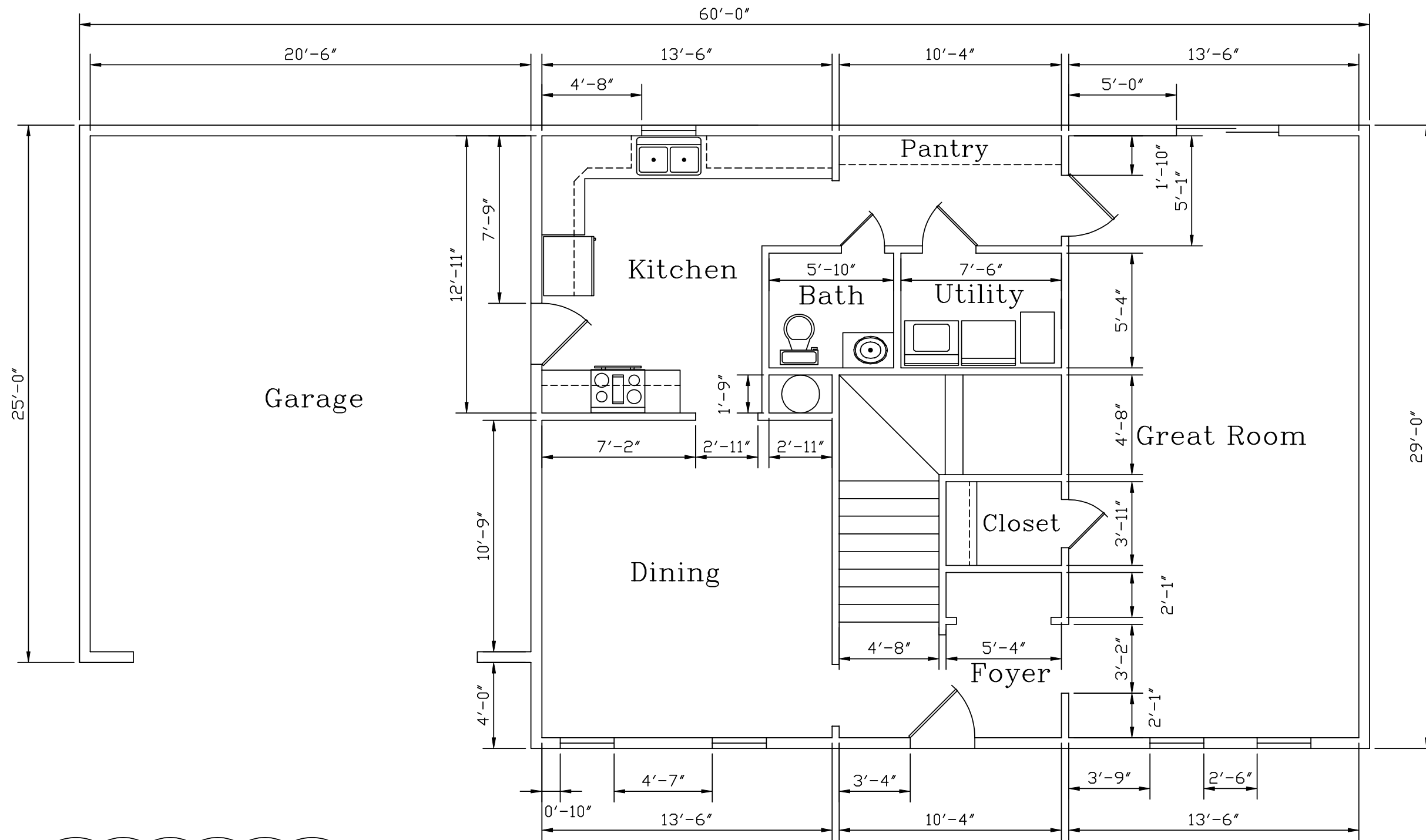


RIGHT ENDWALL ELEVATION




BACK SIDEWALL ELEVATION

REVISIONS					KODIAK STEEL HOMES		Kodiak Steel Homes, Inc 7301 Industry Drive North Little Rock, AR 72117				
NO.	DATE	DESCRIPTION	BY	CK'D	DESCRIPTION:	ELEVATIONS					
					STYLE: LEABROOK	SIZE: 29'-0" X 60'-0"					
					DRN. BY: EAP	CK'D BY: HDS	DATE: 04/03	SCALE: NTS	CODE: BC5	SHEET NO.: A1 OF 10	REV. #



DISCLAIMER:
 THIS FLOOR PLAN IS FOR REFERENCE ONLY.
 LOCAL BUILDING CODES AND REGULATIONS
 MAY CONFLICT.

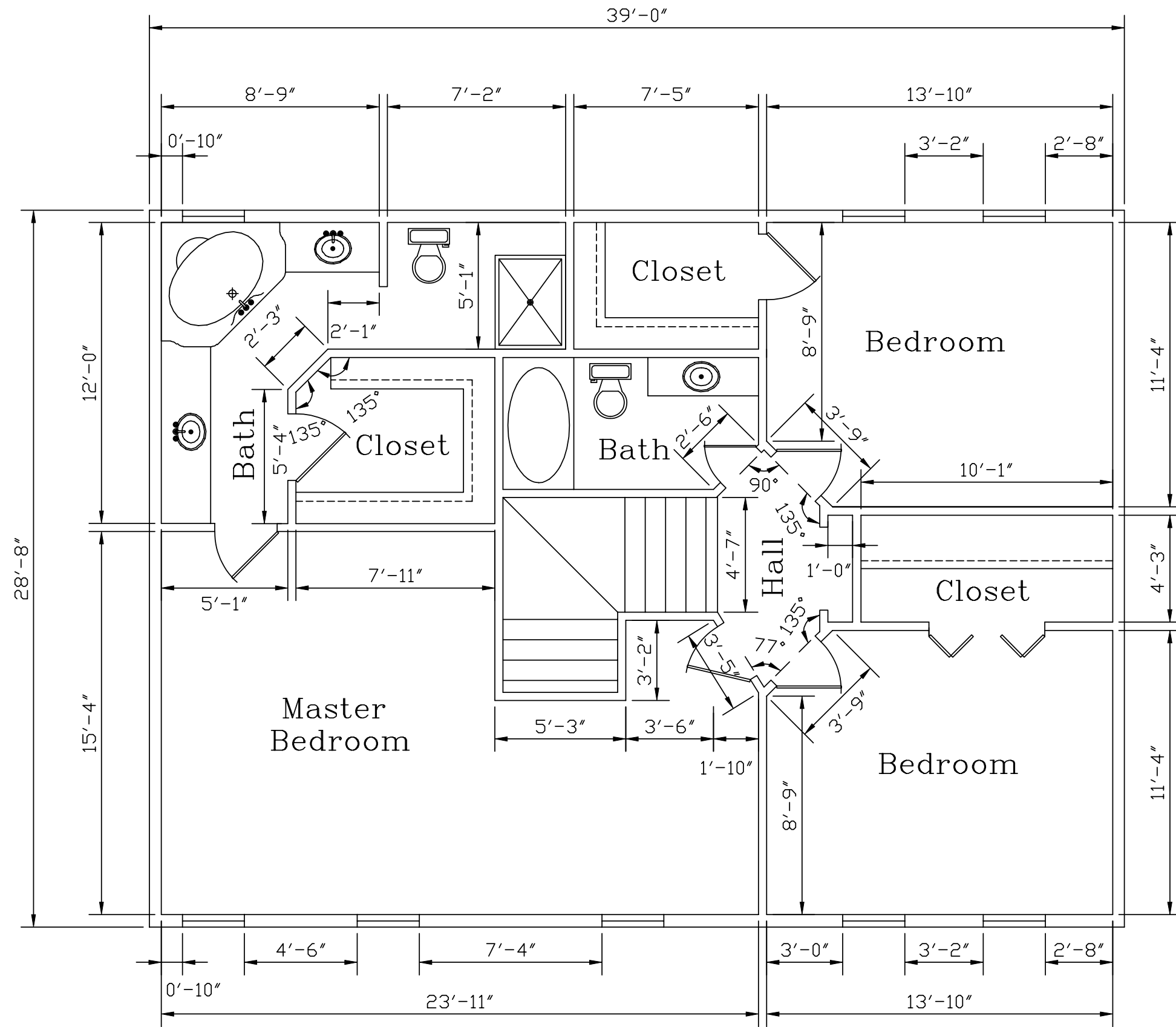
REVISIONS				
NO.	DATE	DESCRIPTION	BY	CK'D



KODIAK STEEL HOMES

Kodiak Steel Homes, Inc
 7301 Industry Drive
 North Little Rock, AR 72117

DESCRIPTION:		DOWNSTAIRS FLOOR PLAN			
STYLE:	LEABROOK	SIZE:	29'-0" X 60'-0"		
DRN. BY	CK'D BY	DATE	SCALE	CODE	SHEET NO.
EAP	HDS	04/03	NTS	BC5	A2 OF 10
					REV. #



DISCLAIMER:
 THIS FLOOR PLAN IS FOR REFERENCE ONLY.
 LOCAL BUILDING CODES AND REGULATIONS
 MAY CONFLICT.

REVISIONS				
NO.	DATE	DESCRIPTION	BY	CK'D

KODIAK STEEL HOMES

Kodiak Steel Homes, Inc
 7301 Industry Drive
 North Little Rock, AR 72117

DESCRIPTION:		UPSTAIRS FLOOR PLAN			
STYLE:	LEABROOK	SIZE:	29'-0" X 60'-0"		
DRN. BY	CK'D BY	DATE	SCALE	CODE	SHEET NO.
EAP	HDS	04/03	NTS	BC5	A3 OF 10
					REV. #