



BACK SIDEWALL ELEVATION




LEFT ENDWALL ELEVATION



FRONT SIDEWALL ELEVATION



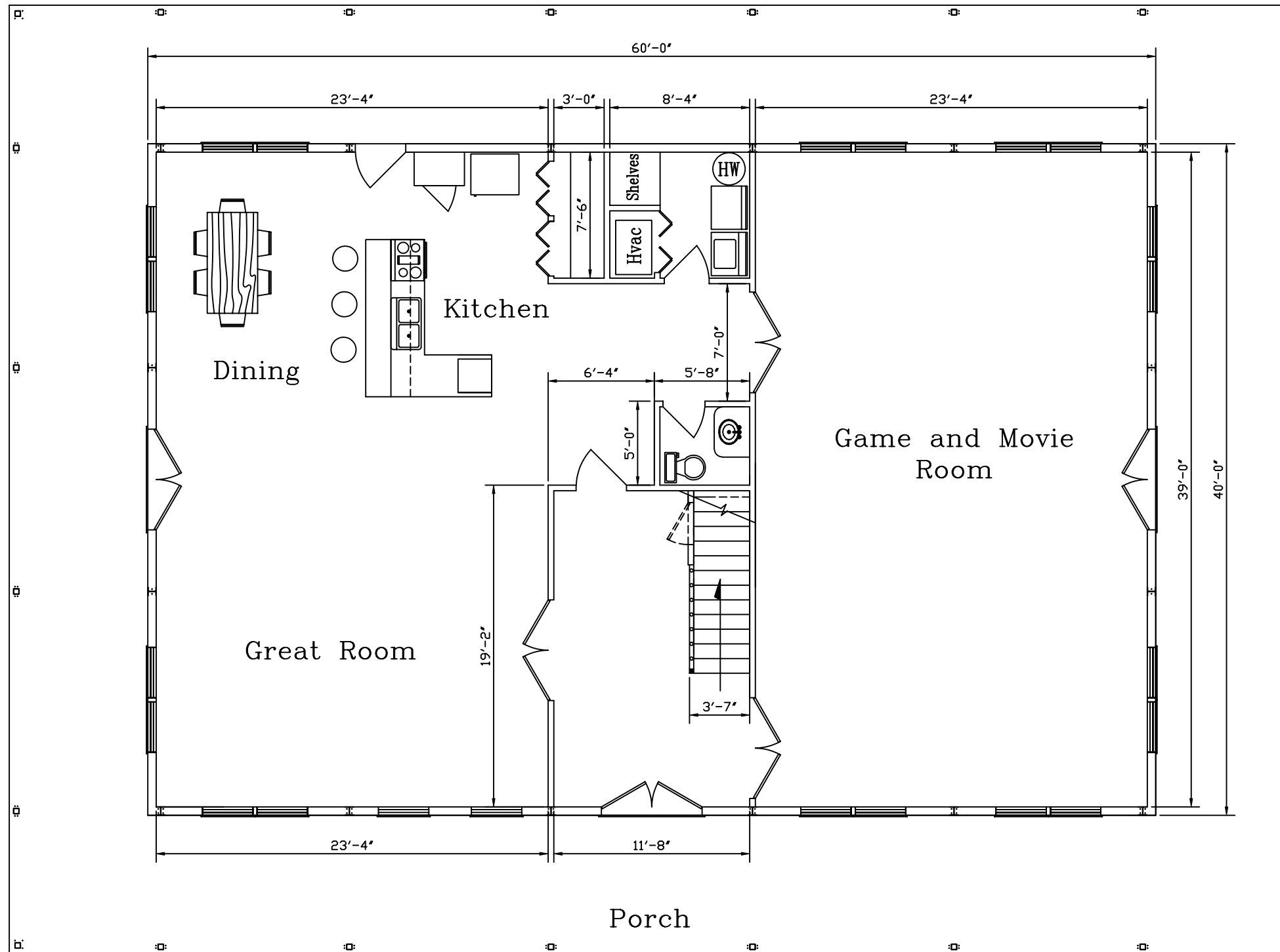
RIGHT ENDWALL ELEVATION

REVISIONS				 <b>KODIAK STEEL HOMES</b> Kodiak Steel Homes, Inc 7301 Industry Drive North Little Rock, AR 72117	
NO.	DATE	DESCRIPTION	BY		

DESCRIPTION:		ELEVATIONS			
STYLE: MEADOWBROOK		SIZE: 40'-0" X 60'-0"			
DRN. BY	CK'D BY	DATE	SCALE	CODE	SHEET NO.
EAP	HDS	04/03	NTS	MBI	AI OF 10
					REV. #

**DISCLAIMER:**  
 THIS FLOOR PLAN IS FOR REFERENCE ONLY.  
 LOCAL BUILDING CODES AND REGULATIONS  
 MAY CONFLICT.



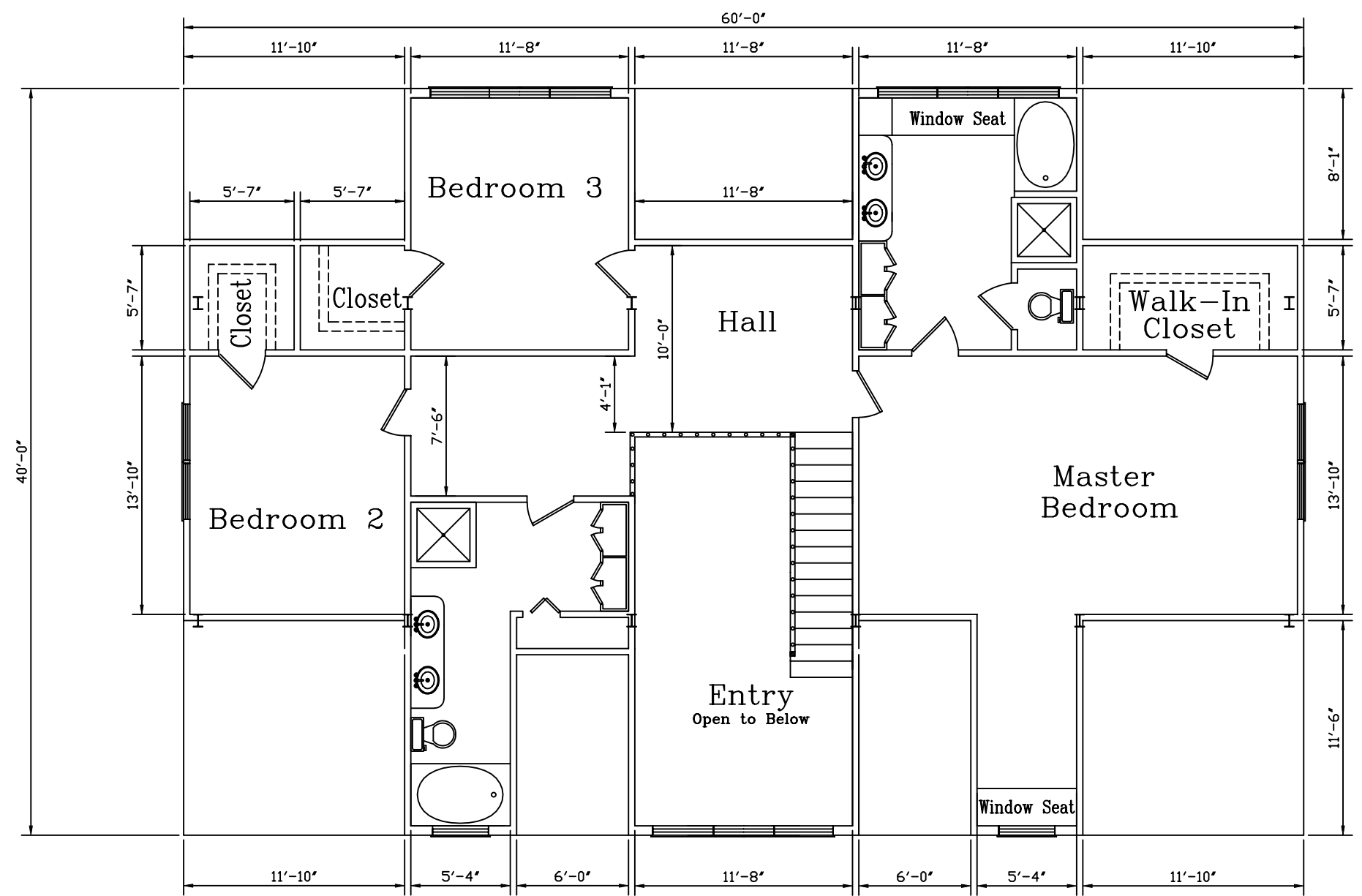
EXTERIOR FLOOR PLAN WINDOW AMOUNT = 22  
 EXTERIOR FLOOR PLAN DOOR AMOUNT = 7

MAIN FLOOR PLAN

REVISIONS				
NO.	DATE	DESCRIPTION	BY	CK'D

<b>KODIAK STEEL HOMES</b>		Kodiak Steel Homes, Inc 7301 Industry Drive North Little Rock, AR 72117		
DESCRIPTION:		DOWNSTAIRS FLOOR PLAN		
STYLE: MEADOWBROOK		SIZE: 40'-0" X 60'-0"		
DRN. BY	CK'D BY	DATE	SCALE	CODE
EAP	HDS	04/03	NT6	MBI
SHEET NO.		REV. #		
A2 OF 10				

**DISCLAIMER:**  
 THIS FLOOR PLAN IS FOR REFERENCE ONLY.  
 LOCAL BUILDING CODES AND REGULATIONS  
 MAY CONFLICT.



UPPER FLOOR PLAN

EXTERIOR FLOOR PLAN WINDOW AMOUNT = 7  
 EXTERIOR FLOOR PLAN DOOR AMOUNT = 0

REVISIONS				
NO.	DATE	DESCRIPTION	BY	CK'D

<b>KODIAK STEEL HOMES</b>		Kodiak Steel Homes, Inc 7301 Industry Drive North Little Rock, AR 72117	
DESCRIPTION: UPSTAIRS FLOOR PLAN		STYLE: MEADOWBROOK	
DRN. BY: EAP	CK'D BY: HDG	DATE: 04/03	SCALE: NTS
CODE: MBI	SHEET NO. A3 OF 10	REV. #	