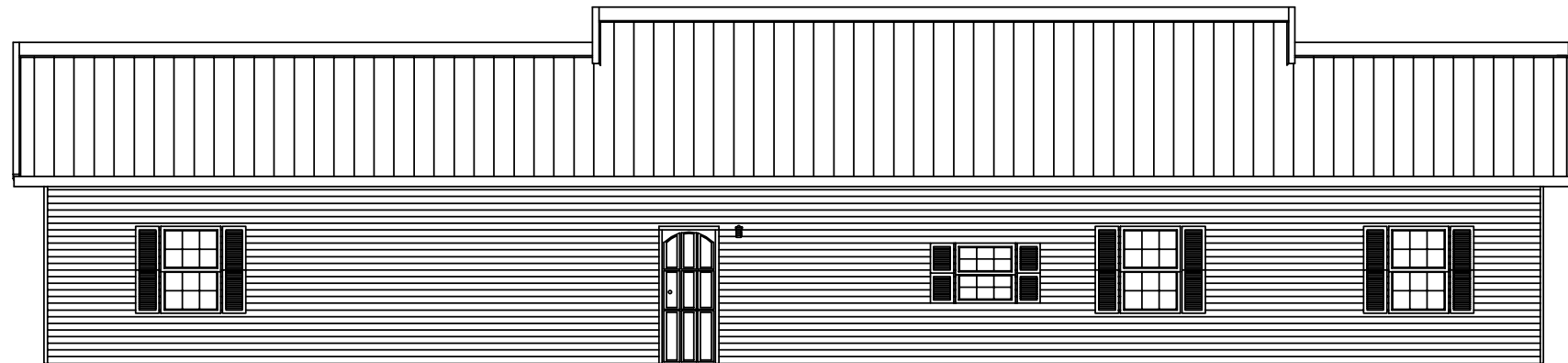


FRONT SIDEWALL ELEVATION



LEFT ENDWALL ELEVATION



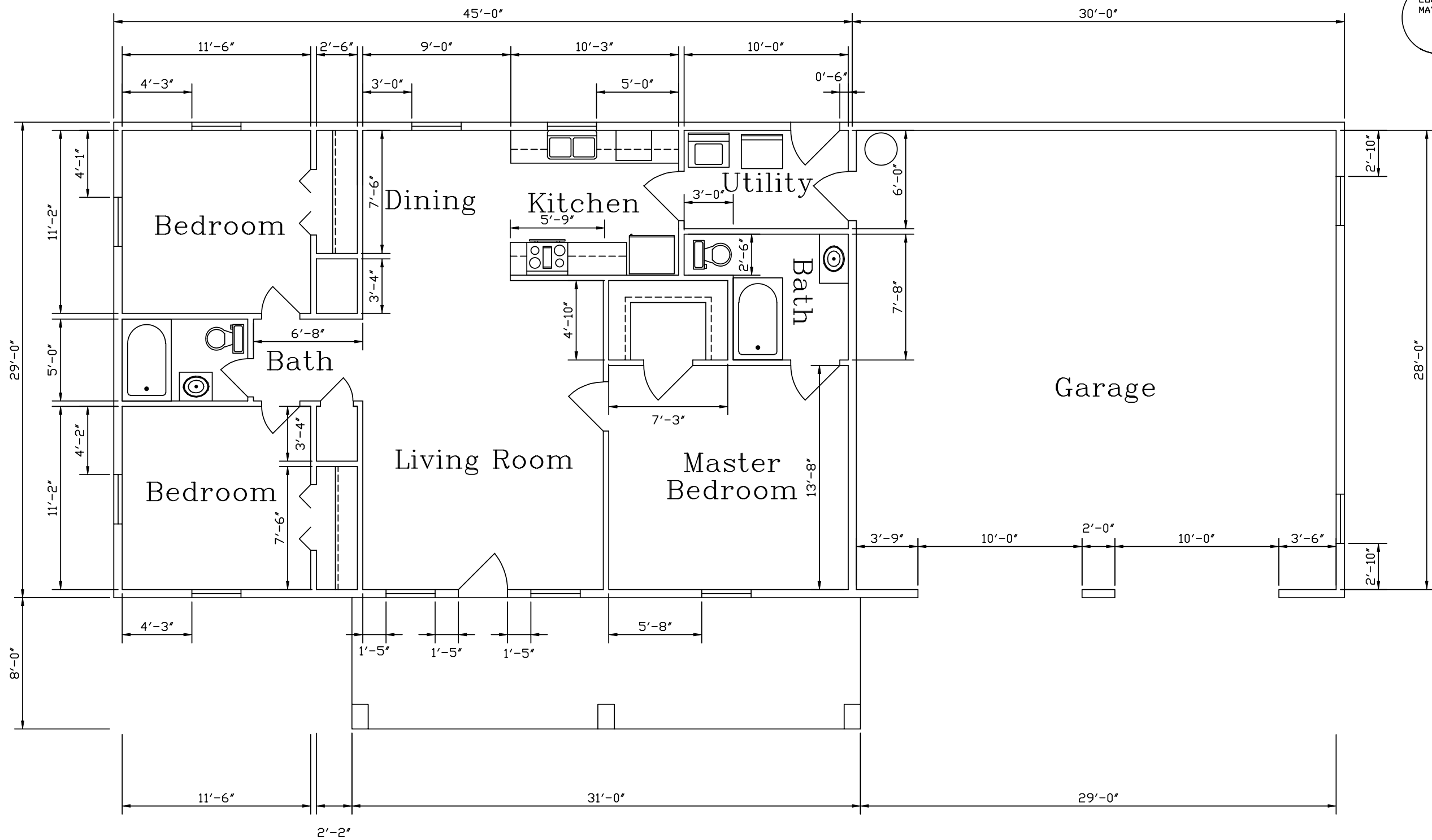
BACK SIDEWALL ELEVATION



RIGHT ENDWALL ELEVATION

REVISIONS				KODIAK STEEL HOMES			Kodiak Steel Homes, Inc 7301 Industry Drive North Little Rock, AR 72117				
NO.	DATE	DESCRIPTION	BY	CK'D	DESCRIPTION:	ELEVATIONS PLAN A					
					STYLE: SOUTHRIDGE 3	SIZE: 29'-0" X 75'-0"					
					DRN. BY: EAP	CK'D BY: HDS	DATE: 04/03	SCALE: NTS	CODE: SC6	SHEET NO. A1 OF 6	REV. #

**DISCLAIMER:**  
 THIS FLOOR PLAN IS FOR REFERENCE ONLY.  
 LOCAL BUILDING CODES AND REGULATIONS  
 MAY CONFLICT.



EXTERIOR FLOOR PLAN WINDOW AMOUNT = 11  
 EXTERIOR FLOOR PLAN DOOR AMOUNT = 4

REVISIONS				
NO.	DATE	DESCRIPTION	BY	CK'D

**KODIAK STEEL HOMES**

DESCRIPTION: FLOOR PLAN A

STYLE: SOUTHRIDGE 3

DRN. BY: EAP    CK'D BY: HDS    DATE: 04/03    SCALE: NTS

**Kodiak Steel Homes, Inc**  
 7301 Industry Drive  
 North Little Rock, AR 72117

SIZE: 29'-0" X 75'-0"

CODE: SC6    SHEET NO. A1 OF 6    REV. #