

NOTE: STAIR, LANDING AND PORCH RAILINGS NOT SHOWN

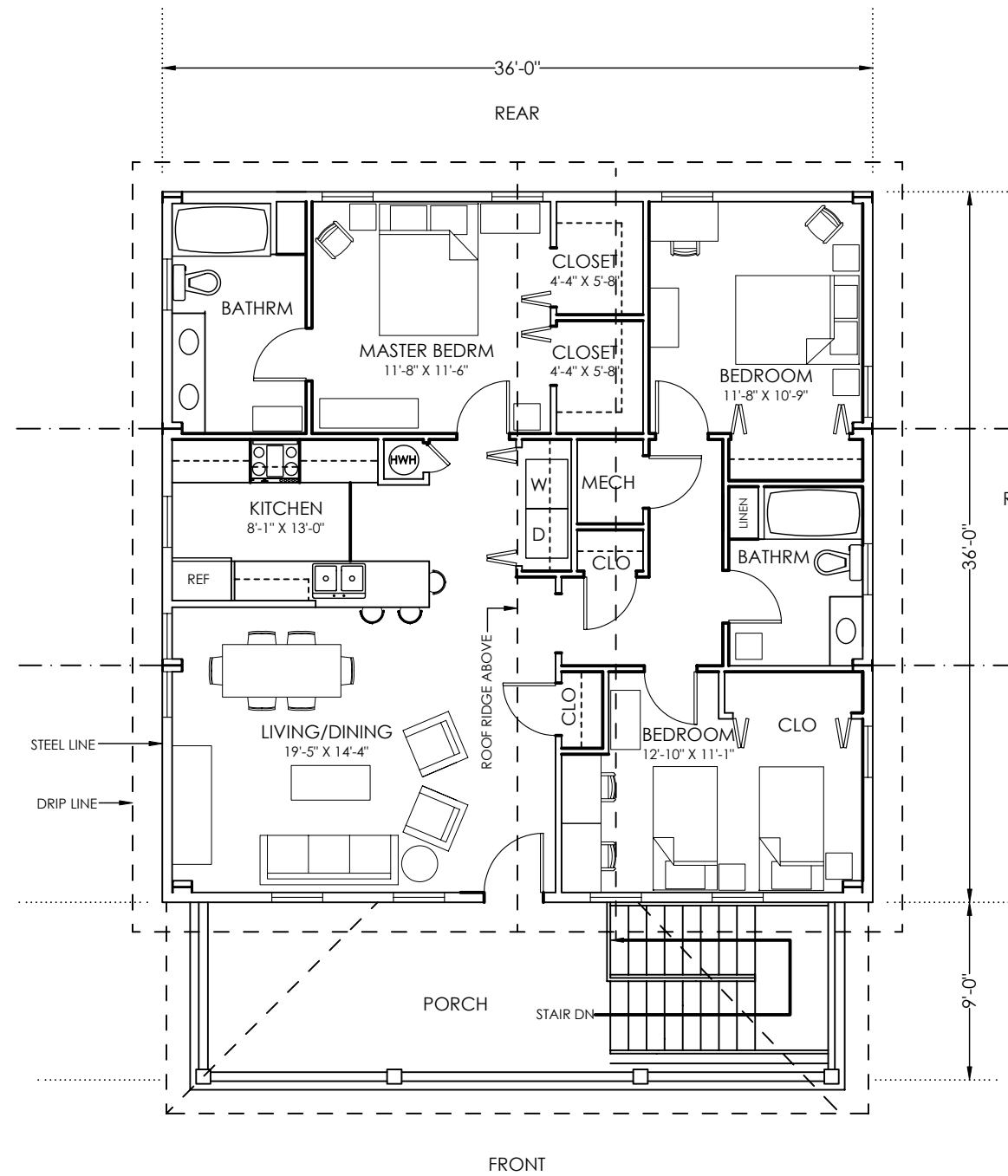


Kodiak Steel Homes, Inc
 7301 Industry Drive
 North Little Rock, AR 72117

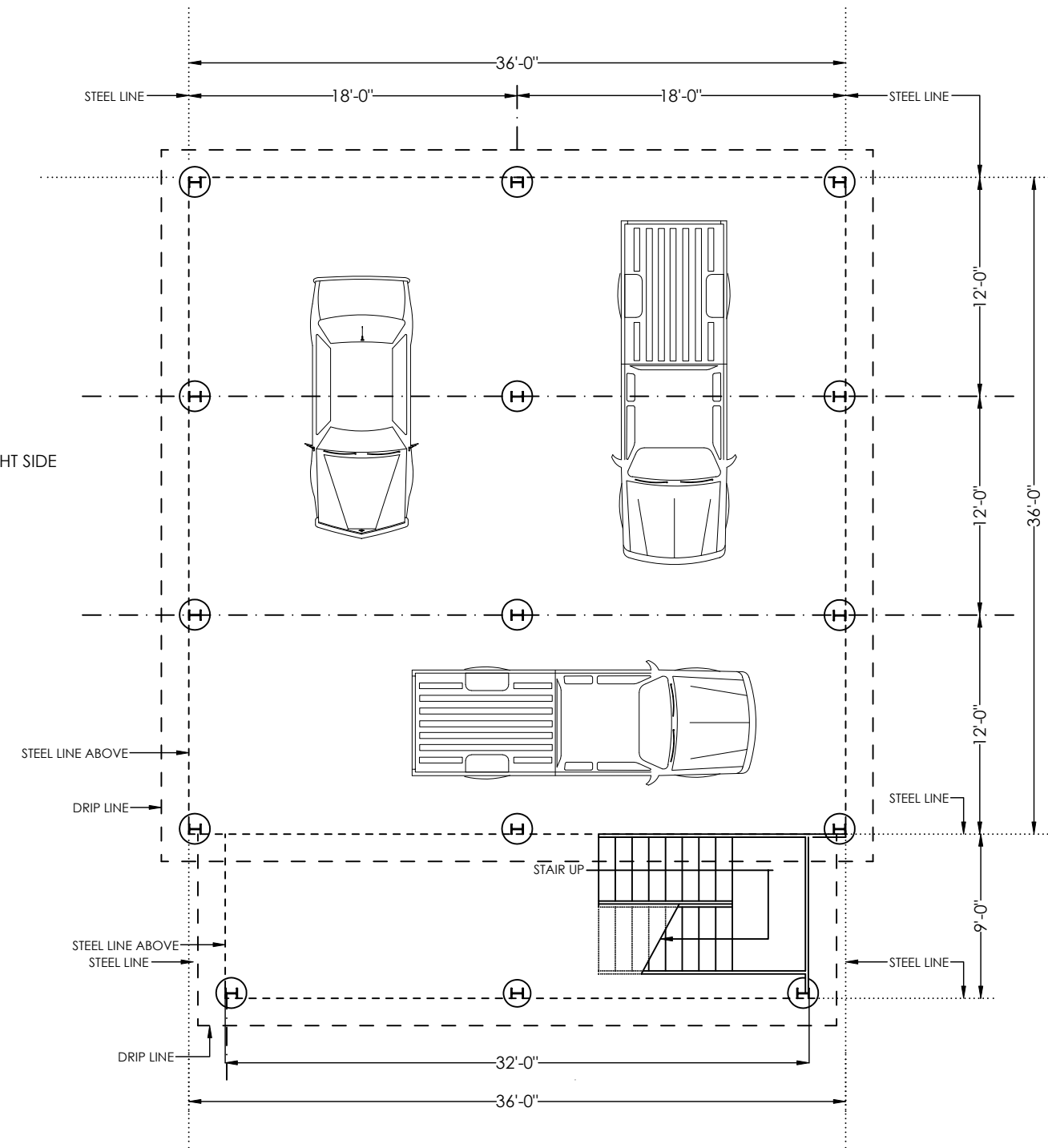
WINDMASTER 2 WITH PORCH
 36' X 36'

DRAWING NO.

A-2



FIRST FLOOR PLAN
1,728 GSF 1/8"=1'-0"



GROUND FLOOR PLAN
1/8"=1'-0"



Kodiak Steel Homes, Inc
7301 Industry Drive
North Little Rock, AR 72117

WINDMASTER 2 WITH PORCH
36' X 36'

DRAWING NO.

A-2