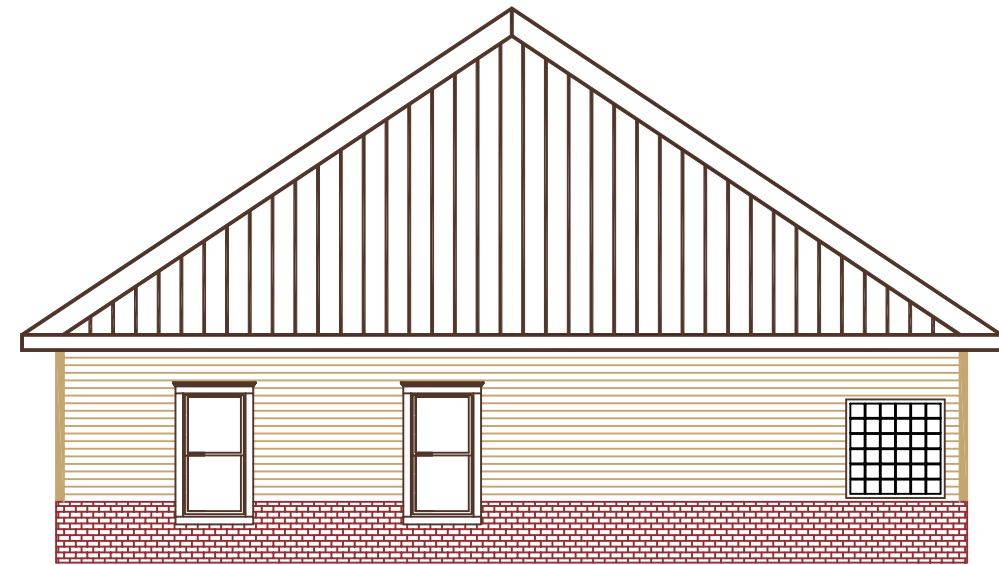




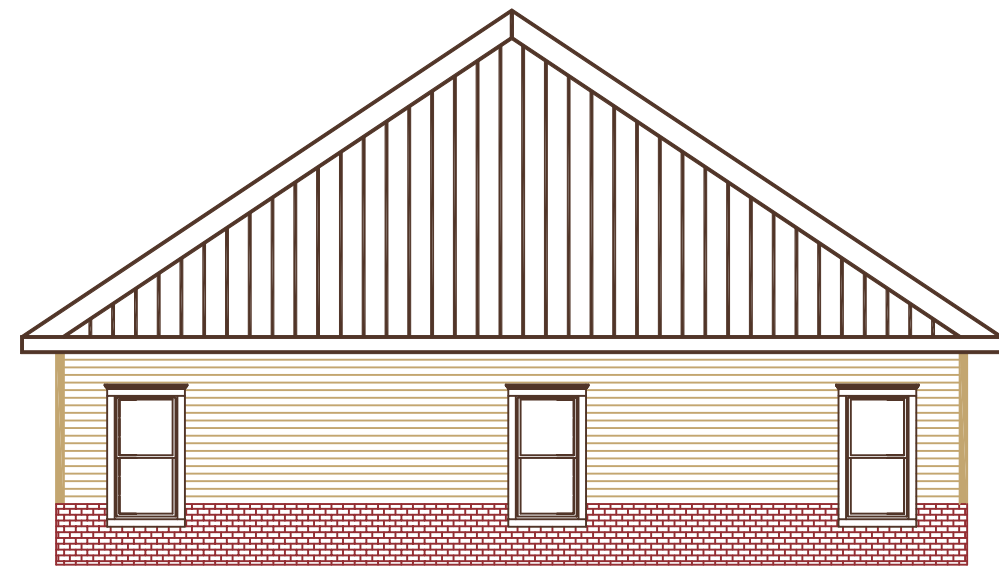
FRONT SIDEWALL ELEVATION



RIGHT ENDWALL ELEVATION



BACK SIDEWALL ELEVATION



LEFT ENDWALL ELEVATION

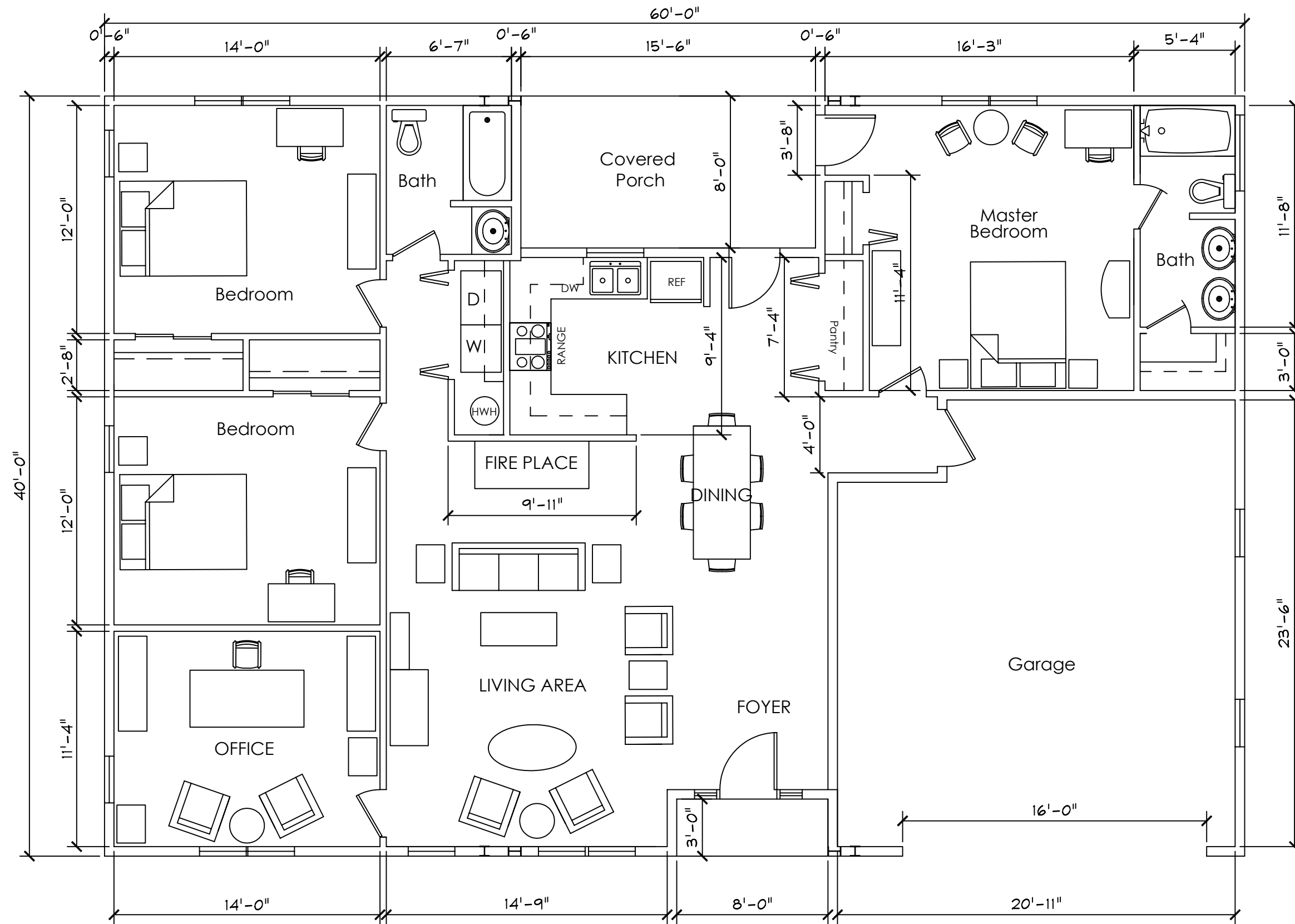


Kodiak Steel Homes, Inc
7301 Industry Drive
North Little Rock, AR 72117

GEORGETOWN

ELEVATIONS
 $\frac{1}{8}'' = 1'-0''$

DRAWING NO.
A1



Kodiak Steel Homes, Inc
 7301 Industry Drive
 North Little Rock, AR 72117

GEORGETOWN

FLOOR PLAN
 3/16" = 1'-0"

DRAWING NO.
 A2