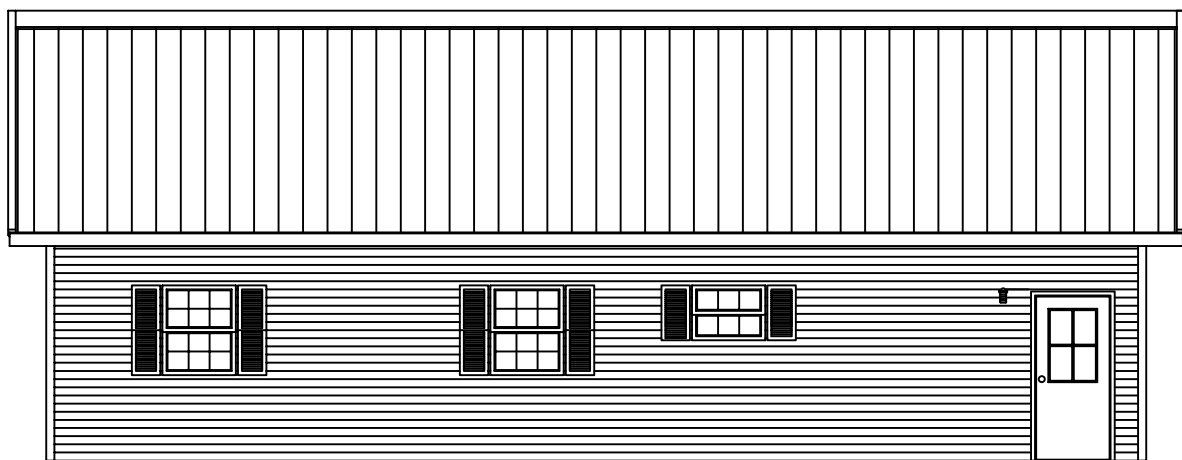


FRONT SIDEWALL ELEVATION




LEFT EDWALL ELEVATION

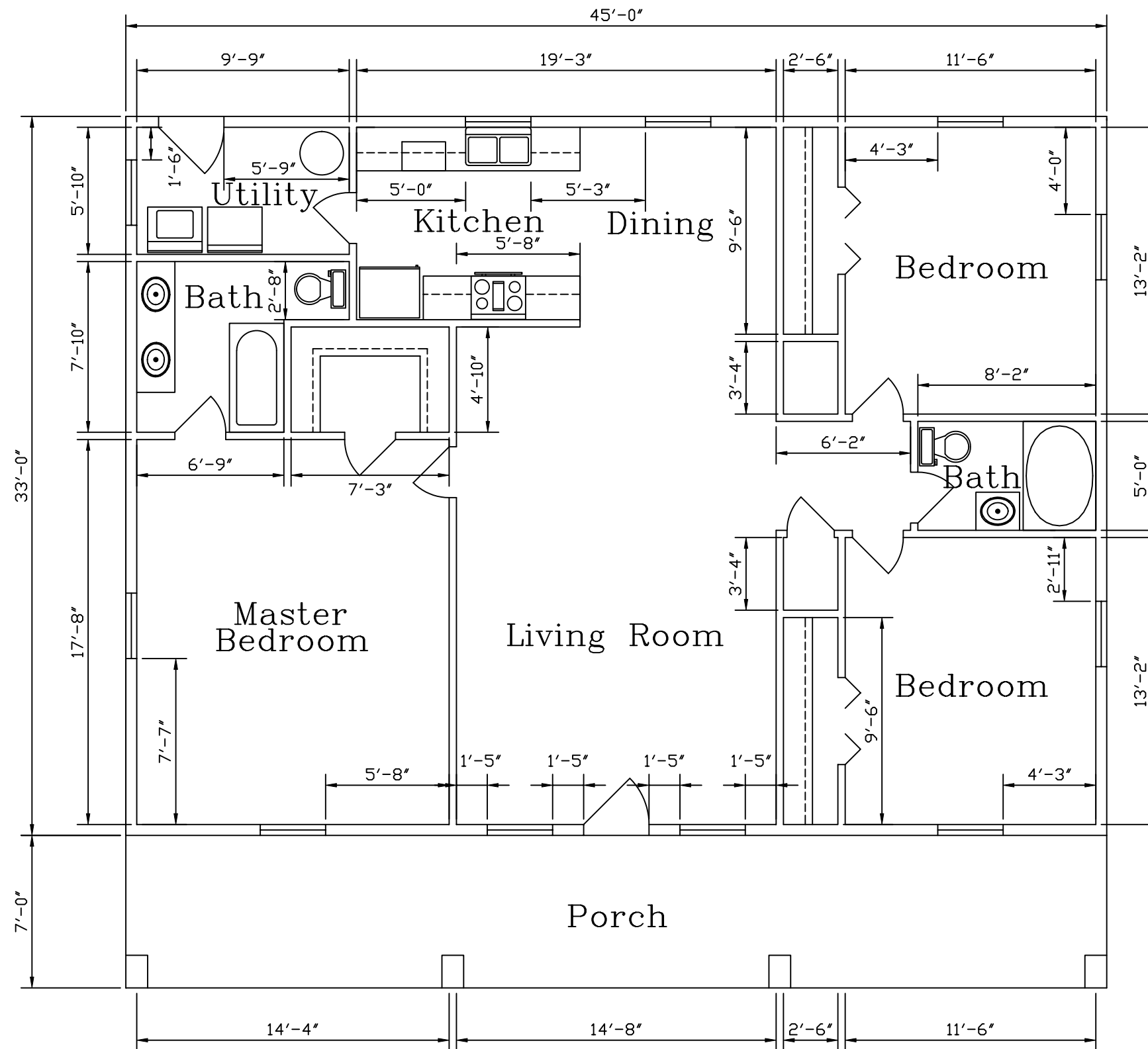


BACK SIDEWALL ELEVATION



RIGHT ENDWALL ELEVATION

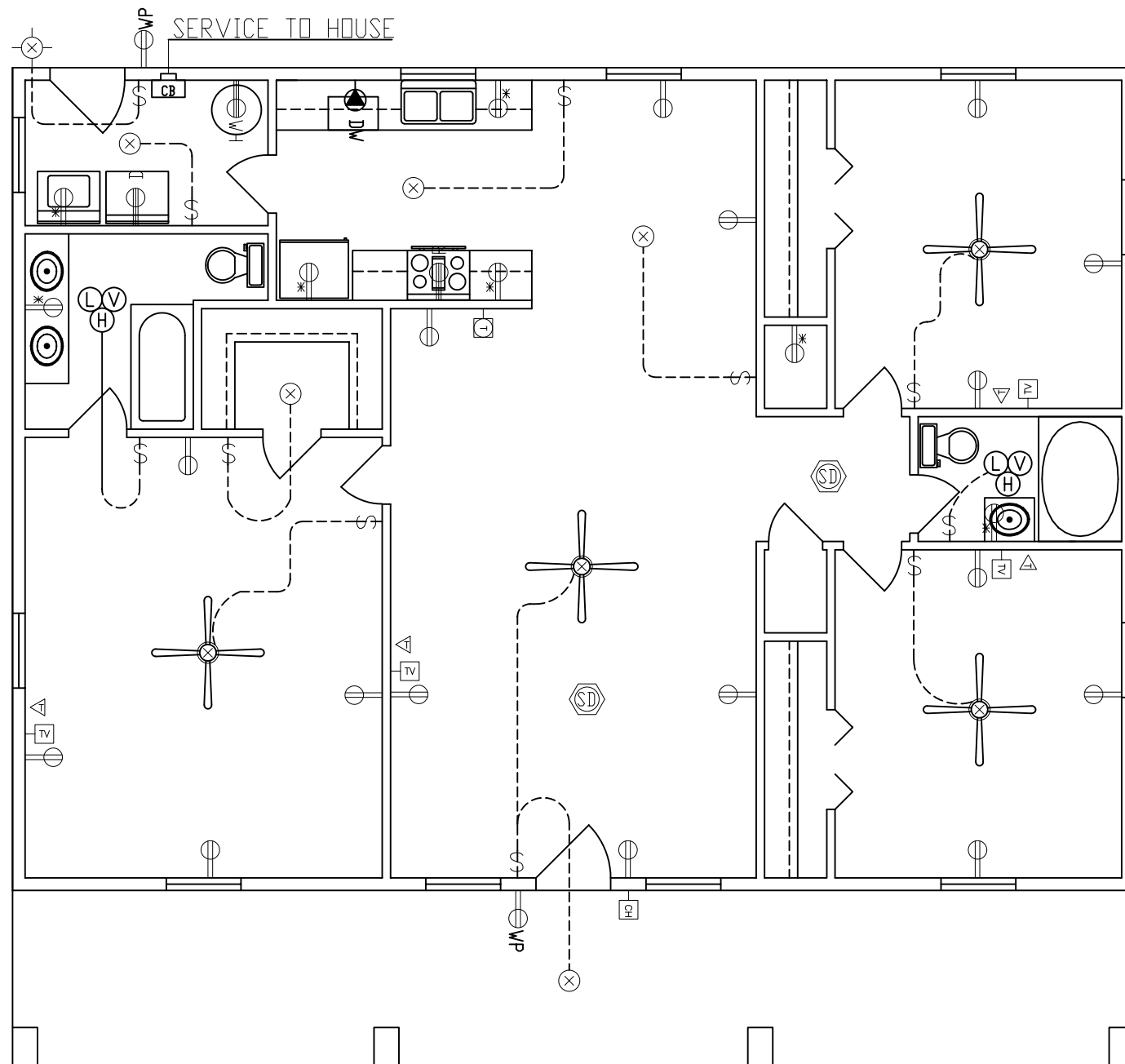
| REVISIONS | | | |  Kodiak Steel Homes, Inc 7301 Industry Drive North Little Rock, AR 72117 | |
|----------------------|---------|-------------|-------|--|-----------|
| NO. | DATE | DESCRIPTION | BY | | |
| | | | | | |
| | | | | | |
| | | | | | |
| | | | | | |
| DESCRIPTION: | | | | ELEVATIONS A | |
| STYLE: AUTUMN VIEW 3 | | | | SIZE: 40'-0" X 45'-0" | |
| DRN. BY | CK'D BY | DATE | SCALE | CODE | SHEET NO. |
| EAP | HDS | 04/03 | NT6 | VF3 | AI |
| REV. # | | | | | 0 |



EXTERIOR FLOOR PLAN WINDOW AMOUNT = 11
 EXTERIOR FLOOR PLAN DOOR AMOUNT = 2

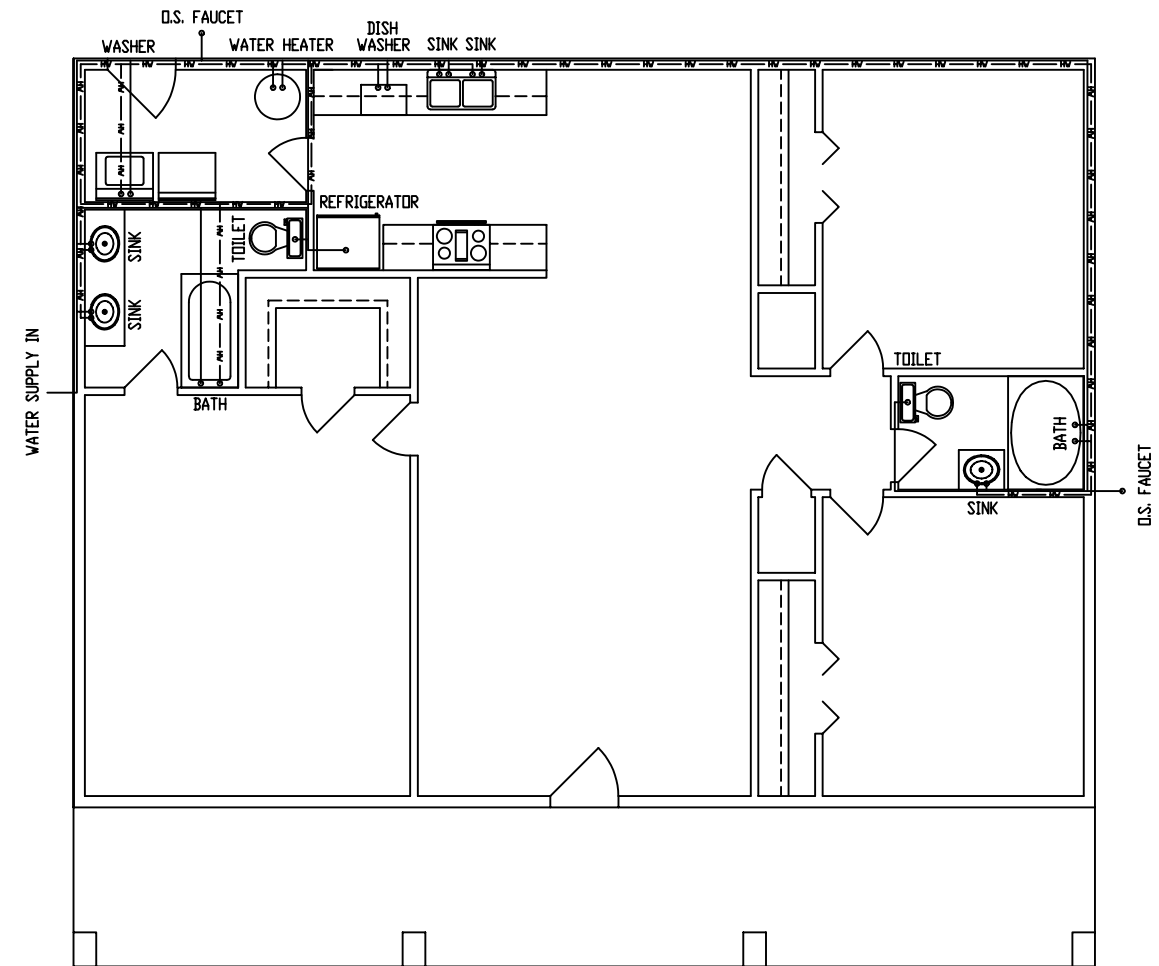
| REVISIONS | | | | | | |
|-----------|------|-------------|----|------|--|--|
| NO. | DATE | DESCRIPTION | BY | CK'D | | |
| | | | | | | |
| | | | | | | |
| | | | | | | |
| | | | | | | |

| | | | | | | |
|---------------------------|---------|---|-------|------|-----------|--------|
| KODIAK STEEL HOMES | | Kodiak Steel Homes, Inc 7301 Industry Drive North Little Rock, AR 72117 | | | | |
| DESCRIPTION: | | FLOOR PLAN A | | | | |
| STYLE: AUTUMN VIEW 3A | | SIZE: 40'-0" X 45'-0" | | | | |
| DRN. BY | CK'D BY | DATE | SCALE | CODE | SHEET NO. | REV. # |
| EAP | HDS | 04/03 | NTS | VF3 | A2 | 0 |

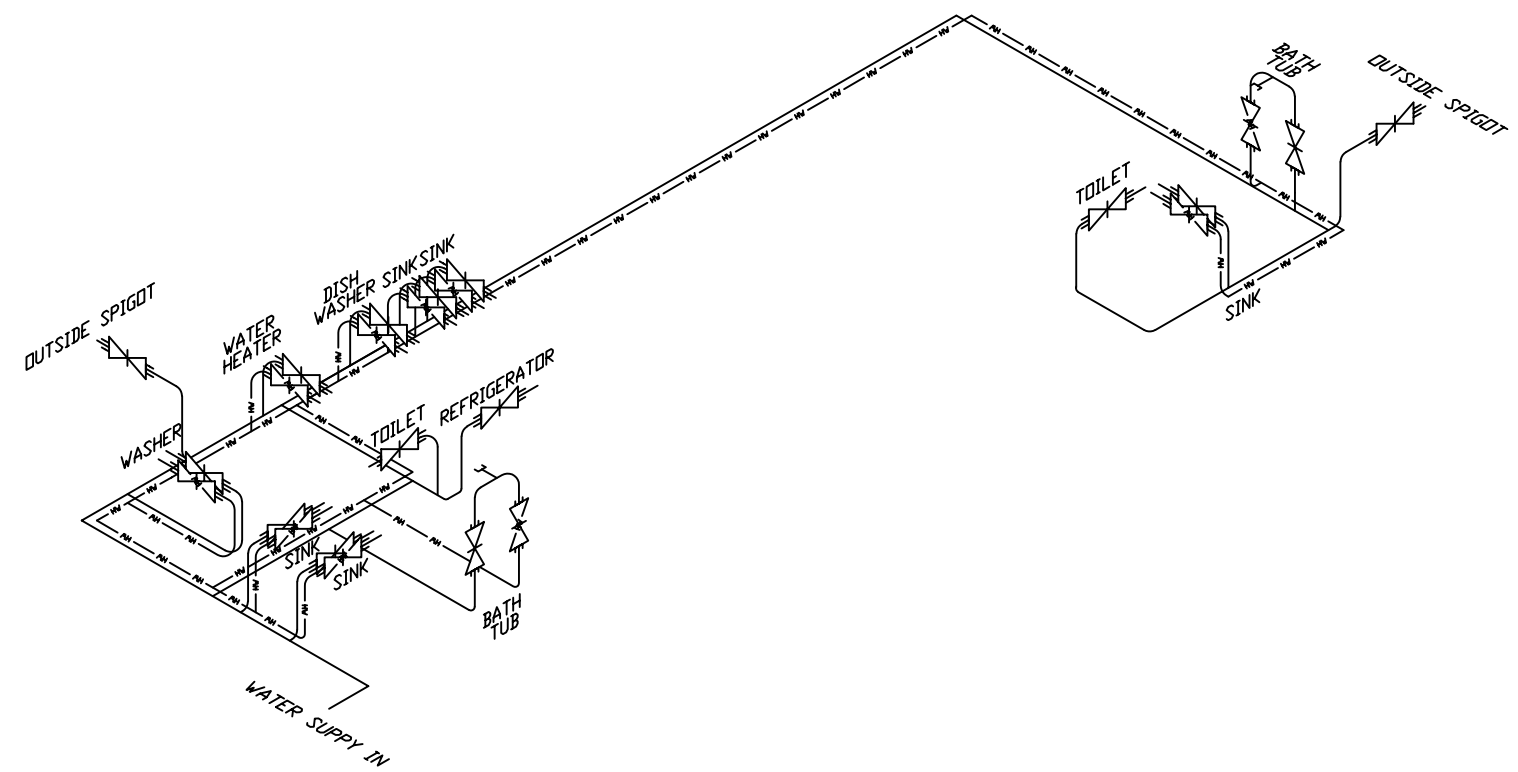


| ELECTRICAL SERVICE | | |
|--------------------|----------------------------------|-------|
| LEGEND | DESCRIPTION | NOTES |
| CB | CIRCUIT BREAKER PANEL | |
| ⊕ | WIRELESS SMOKE DETECTOR | |
| ⚡ | STANDARD WALL SWITCH | |
| ⚡ | STANDARD 3 WAY WALL SWITCH | |
| ⊕ | STANDARD DUPLEX WALL OUTLET | |
| ⊕ | SPLIT WIRED DUPLEX WALL OUTLET | |
| ⊕ | STANDARD 220 VOLT WALL OUTLET | |
| *⊕ | GROUND FAULT CIRCUIT INTERRUPTER | |
| ⊕ | MOTOR CIRCUIT | |
| ⊕ | WATER HEATER (220 VOLT) | |
| ⊕ | LIGHT - VENT HEATER | |
| ⊕ | WEATHER PROOF DUPLEX OUTLET | |
| ⊕ | RANGE / OVEN (220 VOLT) | |
| ⊕ | CLOTHES DRYER (220 VOLT) | |
| ⊗ | CEILING MOUNTED LIGHT | |
| ⊗ | WALL MOUNTED EXTERIOR LIGHT | |
| ⊕ | DISH WASHER | |
| ⊕ | GARBAGE DISPOSAL | |
| ⊕ | TRASH COMPACTOR | |
| ⊕ | TELEPHONE JACK | |
| ⊕ | TELEVISION OUTLET | |
| ⊕ | DOOR CHIME | |
| ⊕ | DOOR CHIME TRANSISTOR | |

| REVISIONS | | | | | KODIAK STEEL HOMES | | | | | | |
|-----------|------|-------------|----|------|---|-----------------------|-------------|------------|-----------|--------------|----------|
| NO. | DATE | DESCRIPTION | BY | CK'D | Kodiak Steel Homes, Inc 7301 Industry Drive North Little Rock, AR 72117 | | | | | | |
| | | | | | DESCRIPTION: ELECTRICAL PLAN A | | | | | | |
| | | | | | STYLE: AUTUMN VIEW 3 | SIZE: 40'-0" X 45'-0" | | | | | |
| | | | | | DRN. BY: EAP | CK'D BY: HDG | DATE: 04/03 | SCALE: NTS | CODE: VF3 | SHEET NO. A3 | REV. # 0 |



PLUMBING FLOOR PLAN



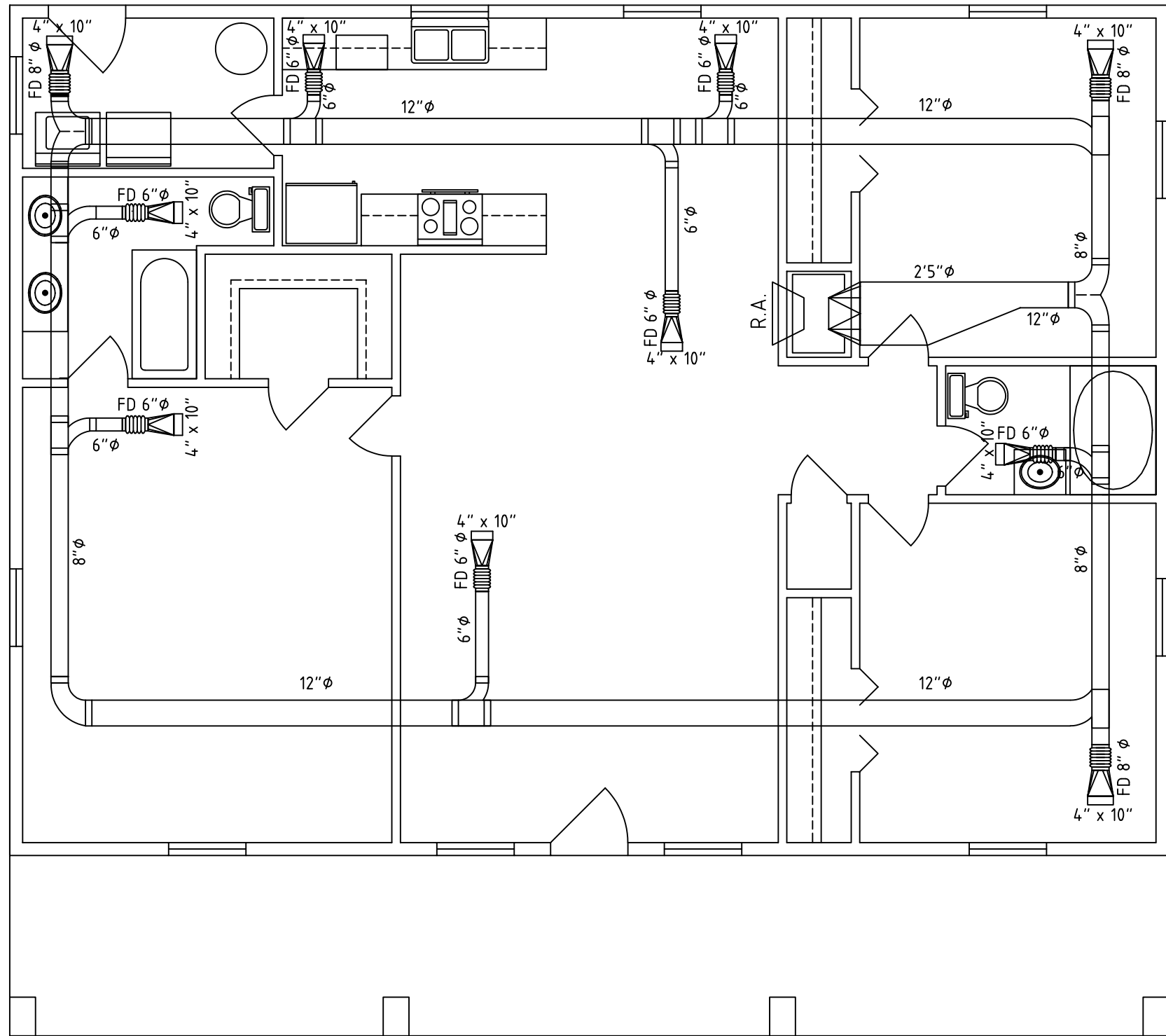
ISOMETRIC VIEW OF WATER SYSTEM
(NOT TO SCALE)

- NOTES:
- 1) MAIN WATER LINE IN TO HOME IS 1" Ø.
 - 2) ALL WATER LINES ARE 3/4" Ø. PAST WATER HEATER
 - 3) APPLIANCE HOSES ARE BY APPLIANCE MANUFACTURE.

| REVISIONS | | | |
|-----------|------|-------------|---------|
| NO. | DATE | DESCRIPTION | BY CK'D |
| | | | |
| | | | |
| | | | |
| | | | |


KODIAK STEEL HOMES Kodiak Steel Homes, Inc
 7301 Industry Drive
 North Little Rock, AR 72117

DESCRIPTION: WATER PLUMBING PLAN A
 STYLE: AUTUMN VIEW 3 SIZE: 40'-0" X 45'-0"
 DRN. BY CK'D BY DATE SCALE CODE SHEET NO. REV. #
 EAP HDG 04/03 NTS VF3 A5 0



HEAT AND AIR CONDITIONING DUCT PLAN

| REVISIONS | | | | | |
|-----------|------|-------------|----|------|--|
| NO. | DATE | DESCRIPTION | BY | CK'D | |
| | | | | | |
| | | | | | |
| | | | | | |
| | | | | | |



KODIAK STEEL HOMES
Kodiak Steel Homes, Inc
7301 Industry Drive
North Little Rock, AR 72117

DESCRIPTION: HVAC PLAN -A

STYLE: AUTUMN VIEW 3 SIZE: 40'-0" X 45'-0"

DRN. BY: EAP CK'D BY: HDG DATE: 04/03 SCALE: NT6 CODE: VF3 SHEET NO. A6 REV. # 0